



NEWEX

Experience New

NEWEX INTERNATIONAL CO., LTD

PHILEXI is a trademark of NEWEX INTERNATIONAL CO., LTD

Sourcing Manager/ Sales Manager: Mr. Justin

Whatsapp/Mobile/Wechat: +8613928822021

Skype ID: liangshizong

Email: justin@philexi.com, justin.liang@newexintl.com

Hongkong Office Address:

FLAT/RM 02, 7/F, SPA CENTRE,
NO.53-55 LOCKHART ROAD,
WAN CHAI, HONG KONG

Guangzhou Office Address:

Room 505, BLDG A, Hengda Business
Center, 3rd Bigui Road, Luopu Street,
Panyu District, Guangzhou, China



Quick Reference

INVOTECH - Scroll Compressors

60Hz

It is the outstanding engineering capability that builds the incomparable reliability
Es la capacidad de ingeniería excepcional La que construye la confiabilidad incomparable





InvoTech Scroll Technologies Co., Ltd.

is a high-tech company.

Our company is founded by a group of engineers who formerly worked for the world's largest manufacturer of scroll compressors. We are a team of passionate and highly qualified professionals with more than 15 years of experience in this industry. Our company's products in addition to impressive sales performance in the domestic market, also sales to Asia, Africa, Europe, South America and other more than 30 countries and regions.

Our company provides specialized scroll compressors and related technical consulting services for heat pump water heaters, refrigeration and air conditioning, chillers and other applications. We are willing to provide our customers with jointly developed or Turn-Key solutions to meet their needs.

Our vision: to become a global first class solution provider by providing innovative products for the climate and energy industries.

es una Compañía de alta tecnología

Nuestra empresa es fundada por un grupo de ingenieros quienes trabajaron para las mas grandes empresas manufactureras de compresores Scroll en el mundo. Somos un equipo de apasionados y profesionales altamente calificados, con más de 15 años de experiencia en esta industria. Nuestros productos además de impresionante rendimiento de ventas en el mercado, también son distribuidos en Asia, África, Europa, Sudamérica y otros 30 países.

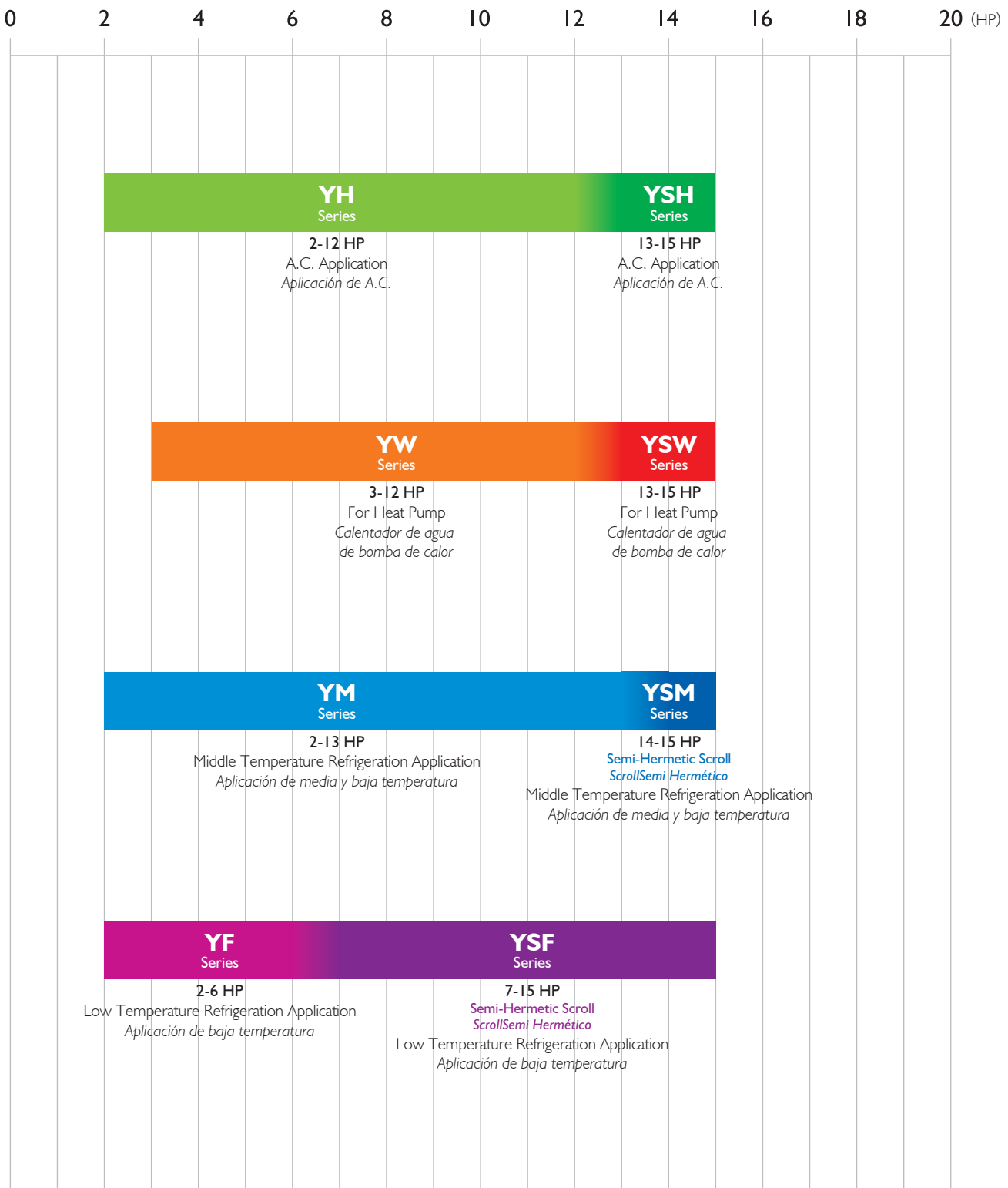
Nuestra compañía provee Compresores Scroll especializados y servicios de consultoría técnica relacionada para calentadores de agua de bomba de calor, Refrigeración y Aire Acondicionado, Chillers y otras aplicaciones. Nos complace proveer a nuestros clientes en forma conjunta soluciones para cumplir sus necesidades.

Nuestra Visión: Ser un proveedor de soluciones de clase mundial brindando productos innovadores para el ambiente e industrias energéticas.

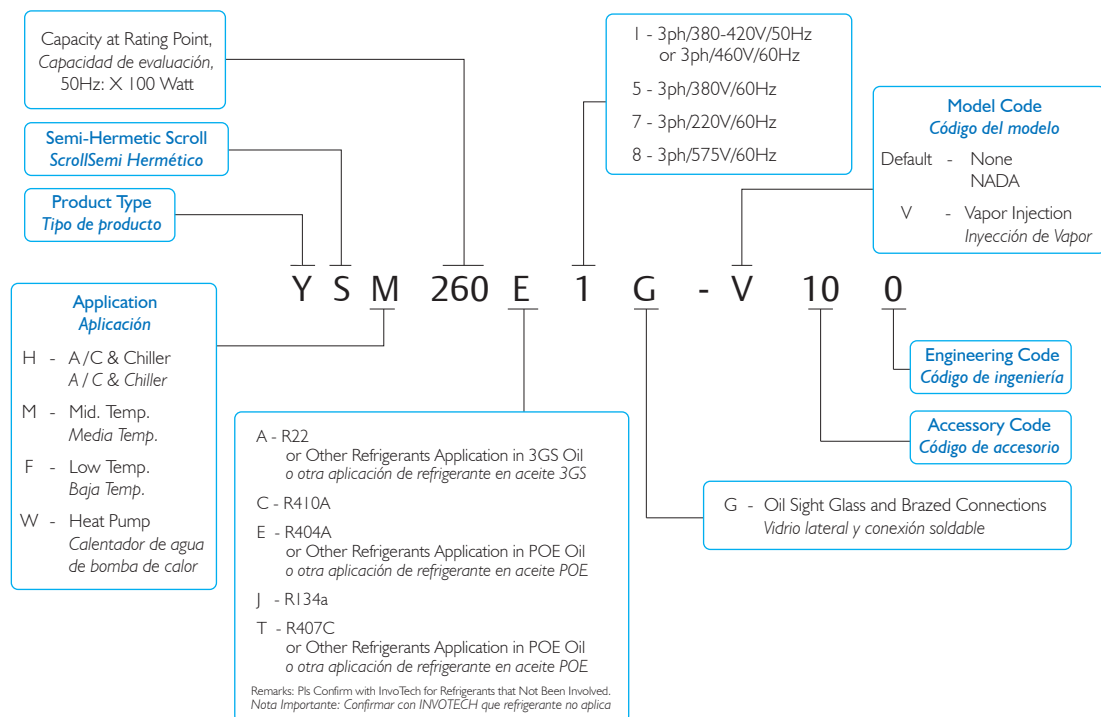
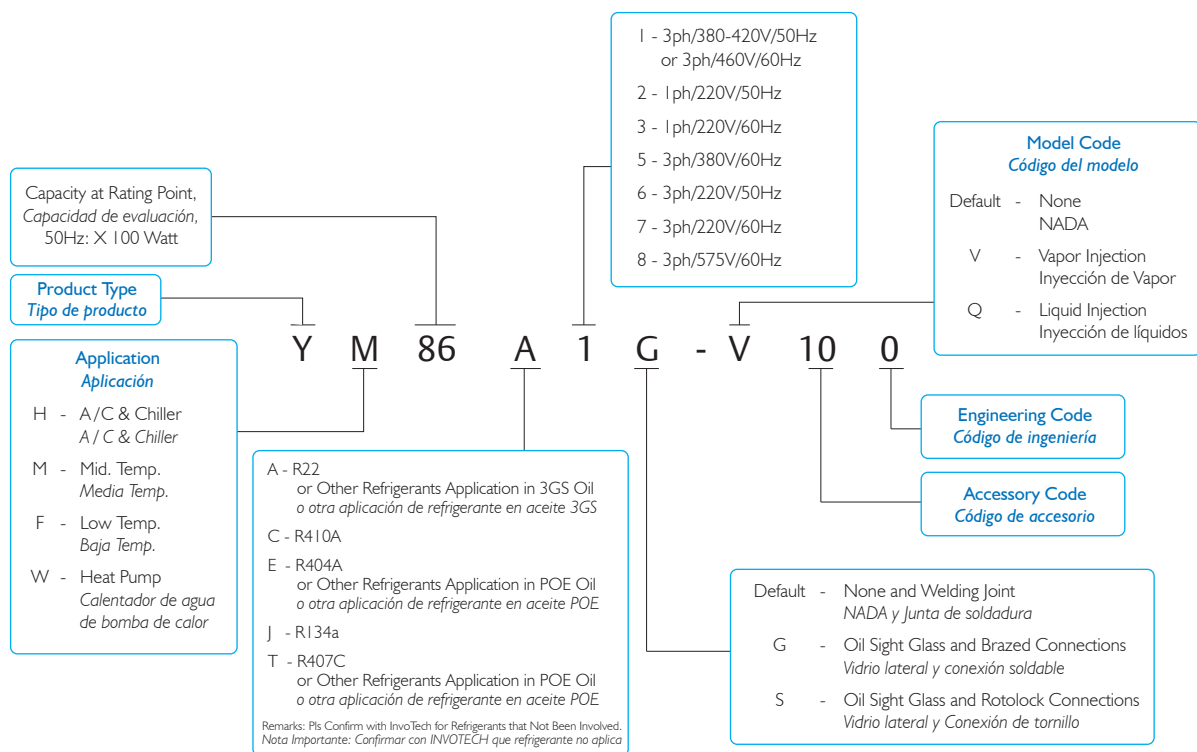


Models / Modelos	I
Nomenclature / Nomenclatura	2
Specifications / Especificaciones	3
YH/YSH	3
YM/YSM	9
YF/YSF	13
Operating Envelope / Desarrollo de Operación	19
YH/YSH	19
YM/YSM	19
YF/YSF	20
Dimensions / Dimensiones	22

Models / Modelos



Nomenclature / Nomenclatura



YH/YSH Series

R22

A.C. Application
Aplicación de A.C.

Model Modelo	Electricity Electricidad (V/Hz)	Phase Fases (Ph)	Power Caballos de fuerza (HP)	Displ. Desp. (m³/h)	Capacity Capacidad (W)	Power in Watt Potencia en Watt (W)	COP	Running Current Corriente de operación (A)	MOC (A)	LRA (A)	Initial Charge Volume Carga de volumen inicial (L)	Dimensions Dimensiones
220V 1 Phase/Fases 60Hz												R22
YH69A3-100	220V/60HZ	1	2	8.0	8160	2620	3.12	12.4	17.4	76	1.4	P22
YH89A3-100	220V/60HZ	1	3	10.3	10858	3386	3.21	16.0	23.0	76	1.4	P22
YH104A3-100	220V/60HZ	1	3.5	12.4	12720	3876	3.28	18.4	25.8	109	1.6	P22
YH119A3-100	220V/60HZ	1	4	13.8	14280	4350	3.28	20.6	29.0	140	1.6	P23
YH128A3-100	220V/60HZ	1	4.3	14.9	15360	4596	3.34	21.8	31.2	140	1.6	P23
YH133A3-100	220V/60HZ	1	4.5	15.5	15960	4836	3.30	22.9	32.4	140	1.6	P23
YH140A3-100	220V/60HZ	1	4.6	16.2	16800	5090	3.30	24.1	34.1	140	1.6	P23
YH150A3-100	220V/60HZ	1	5	17.4	18000	5454	3.30	27.5	37.1	140	1.6	P23
220V 3 Phase/Fases 60Hz												R22
YH69A7-100	220V/60HZ	3	2	8.0	8160	2570	3.18	9.5	12.6	99	1.4	P22
YH89A7-100	220V/60HZ	3	3	10.3	10680	3180	3.35	11.0	15.5	99	1.4	P22
YH104A7-100	220V/60HZ	3	3.5	12.4	12720	3790	3.35	13.5	16.9	136	1.6	P22
YH119A7-100	220V/60HZ	3	4	13.8	14280	4220	3.38	14.5	19.9	136	1.6	P22
YH128A7-100	220V/60HZ	3	4.3	14.9	15360	4450	3.45	14.9	20.4	136	1.6	P22
YH133A7-100	220V/60HZ	3	4.5	15.5	15960	4630	3.45	15.3	21.7	136	1.6	P22
YH140A7-100	220V/60HZ	3	4.6	16.2	16800	4910	3.42	16.6	22.8	136	1.6	P22
YH150A7-100	220V/60HZ	3	5	17.4	18000	5250	3.42	17.0	23.8	136	1.6	P22
YH175A7-100	220V/60HZ	3	6	20.3	20640	5980	3.45	18.6	27.9	167	1.6	P23
YH190A7-100	220V/60HZ	3	6.5	21.7	22560	6605	3.42	20.1	30.3	167	1.6	P23
YH200A7-100	220V/60HZ	3	7	22.4	24400	7115	3.43	23.6	32.4	241	2.7	P24
YH230A7-100	220V/60HZ	3	8	25.7	28182	8107	3.48	26.5	36.4	241	2.7	P24
YH266A7-100	220V/60HZ	3	9	29.6	32452	9317	3.48	30.5	40.8	241	2.7	P24
YH307A7-100	220V/60HZ	3	10.5	34.9	37454	10672	3.51	32.2	46.6	290	2.7	P24
YH355A7-100	220V/60HZ	3	12	39.5	43310	12269	3.53	36.8	52.3	290	2.7	P24
380V 3 Phase/Fases 60Hz												R22
YH69A5-100	380V/60HZ	3	2	8.0	8160	2570	3.18	5.5	7.3	51	1.4	P22
YH89A5-100	380V/60HZ	3	3	10.3	10680	3180	3.35	6.4	9.0	51	1.4	P22
YH104A5-100	380V/60HZ	3	3.5	12.4	12720	3790	3.35	7.8	10.3	69	1.6	P22
YH119A5-100	380V/60HZ	3	4	13.8	14280	4220	3.38	8.1	11.4	69	1.6	P22
YH128A5-100	380V/60HZ	3	4.3	14.9	15360	4450	3.45	8.6	11.8	69	1.6	P22
YH133A5-100	380V/60HZ	3	4.5	15.5	15960	4630	3.45	8.9	12.6	69	1.6	P22
YH140A5-100	380V/60HZ	3	4.6	16.2	16800	4910	3.42	9.6	13.2	69	1.6	P22
YH150A5-100	380V/60HZ	3	5	17.4	18000	5250	3.42	9.8	13.8	69	1.6	P22
YH175A5-100	380V/60HZ	3	6	20.3	20640	5980	3.45	10.8	16.2	94	1.6	P23
YH190A5-100	380V/60HZ	3	6.5	21.7	22560	6540	3.45	11.5	17.4	94	1.6	P23
YH200A5-100	380V/60HZ	3	7	22.4	24400	7115	3.43	13.7	18.8	135	2.7	P24
YH230A5-100	380V/60HZ	3	8	25.7	28182	8107	3.48	15.4	21.1	135	2.7	P24
YH266A5-100	380V/60HZ	3	9	29.6	32452	9317	3.48	17.7	23.6	135	2.7	P24
YH307A5-100	380V/60HZ	3	10.5	34.9	37454	10672	3.51	18.6	27.0	163	2.7	P24
YH355A5-100	380V/60HZ	3	12	39.5	43310	12269	3.53	21.3	30.3	163	2.7	P24

Cooling capacity @ ARI standard rating conditions: Evaporating temperature: 7.2°C (45°F), Condensing temperature: 54.4°C (130°F), Superheat 11.1K, sub-cooling 8.3K.

Capacidad de enfriamiento @ ARI Condiciones de calibración HT: Temperatura de evaporación: 7.2°C (45°F), Temperatura de condensación: 54.4°C (130°F), Supercalentamiento 11.1K, sub-enfriamiento 8.3K.

YH/YSH Series

R22

A.C. Application
Aplicación de A.C.

Model Modelo	Electricity Electricidad (V/Hz)	Phase Fases (Ph)	Power Caballos de fuerza (HP)	Displ. Desp. (m³/h)	Capacity Capacidad (W)	Power in Watt Potencia en Watt (W)	COP (W/W)	Running Current Corriente de operación (A)	MOC (A)	LRA (A)	Initial Charge Volume Carga de volumen inicial (L)	Dimensions Dimensiones
460V 3 Phase/Fases 60Hz												R22
YH69AI-100	460V/60HZ	3	2	8.0	8296	2589	3.20	4.8	6.1	45	1.4	P22
YH89AI-100	460V/60HZ	3	3	10.3	10858	3207	3.39	5.3	7.5	45	1.4	P22
YH104AI-100	460V/60HZ	3	3.5	12.4	12932	3824	3.38	6.5	8.6	60	1.4	P22
YH119AI-100	460V/60HZ	3	4	13.8	14518	4259	3.41	7.0	9.5	60	1.4	P22
YH128AI-100	460V/60HZ	3	4.3	14.9	15616	4489	3.48	7.5	10.1	60	1.4	P22
YH133AI-100	460V/60HZ	3	4.5	15.5	16226	4671	3.47	7.7	10.5	60	1.4	P22
YH140AI-100	460V/60HZ	3	4.6	16.2	17080	4949	3.45	8.0	11.0	60	1.4	P22
YH150AI-100	460V/60HZ	3	5	17.4	18300	5288	3.46	8.3	11.5	60	1.4	P22
YH175AI-100	460V/60HZ	3	6	20.3	20984	6026	3.48	9.0	13.5	65	1.6	P23
YH190AI-100	460V/60HZ	3	6.5	21.7	22936	6595	3.48	9.6	14.5	65	1.6	P23
YH200AI-100	460V/60HZ	3	7	22.4	24400	7115	3.43	11.3	15.5	117	2.7	P24
YH230AI-100	460V/60HZ	3	8	25.7	28182	8107	3.48	12.7	17.4	117	2.7	P24
YH266AI-100	460V/60HZ	3	9	29.6	32452	9317	3.48	14.6	19.5	117	2.7	P24
YH307AI-100	460V/60HZ	3	10.5	34.9	37454	10672	3.51	15.4	22.3	121	2.7	P24
YH355AI-100	460V/60HZ	3	12	39.5	43310	12269	3.53	17.6	25.0	121	2.7	P24
YSH400AIG-100	460V/60HZ	3	13	45.2	47400	13941	3.40	20.2	27.4	148.5	3.2	P24
YSH450AIG-100	460V/60HZ	3	15	51.0	52320	15618	3.35	22.6	31.3	148.5	3.2	P24
575V 3 Phase/Fases 60Hz												R22
YH69A8-100	575V/60HZ	3	2	8.0	8160	2570	3.18	3.6	4.8	38	1.4	P22
YH89A8-100	575V/60HZ	3	3	10.3	10680	3180	3.35	4.2	5.9	38	1.4	P22
YH104A8-100	575V/60HZ	3	3.5	12.4	12720	3790	3.35	5.2	6.9	43	1.6	P22
YH119A8-100	575V/60HZ	3	4	13.8	14280	4220	3.38	5.4	7.6	43	1.6	P22
YH128A8-100	575V/60HZ	3	4.3	14.9	15360	4450	3.45	5.7	7.8	43	1.6	P22
YH133A8-100	575V/60HZ	3	4.5	15.5	15960	4630	3.45	5.9	8.3	43	1.6	P22
YH140A8-100	575V/60HZ	3	4.6	16.2	16800	4910	3.42	6.3	8.7	43	1.6	P22
YH150A8-100	575V/60HZ	3	5	17.4	18000	5250	3.42	6.5	9.1	43	1.6	P22
YH175A8-100	575V/60HZ	3	6	20.3	20640	5980	3.45	7.1	10.7	53	1.6	P23
YH200A8-100	575V/60HZ	3	7	22.4	24400	7115	3.43	9.0	12.4	80	2.7	P24
YH230A8-100	575V/60HZ	3	8	25.7	28182	8107	3.48	10.2	13.9	80	2.7	P24
YH266A8-100	575V/60HZ	3	9	29.6	32452	9317	3.48	11.7	15.6	80	2.7	P24
YH307A8-100	575V/60HZ	3	10.5	34.9	37454	10672	3.51	12.3	17.8	95	2.7	P24
YH355A8-100	575V/60HZ	3	12	39.5	43310	12269	3.53	14.1	20.0	95	2.7	P24

Cooling capacity @ ARI standard rating conditions: Evaporating temperature: 7.2°C (45°F), Condensing temperature: 54.4°C (130°F), Superheat 11.1K, sub-cooling 8.3K.
Capacidad de enfriamiento @ ARI Condiciones de calibración HT: Temperatura de evaporación: 7.2°C (45°F), Temperatura de condensación: 54.4°C (130°F),
Supercalentamiento 11.1K, sub-enfriamiento 8.3K.

YH/YSH Series

R407C

A.C. Application
Aplicación de A.C.

Model Modelo	Electricity Electricidad (V/Hz)	Phase Fases (Ph)	Power Caballos de fuerza (HP)	Displ. Desp. (m³/h)	Capacity Capacidad (W)	Power in Watt Potencia en Watt (W)	COP	Running Current Corriente de operación (A)	MOC (A)	LRA (A)	Initial Charge Volume Carga de volumen inicial (L)	Dimensions Dimensiones
220V 1 Phase/Fases 60Hz												R407C
YH69T3-100	220V/60HZ	1	2	8.0	7836	2640	2.97	12.5	17.5	76	1.4	P22
YH89T3-100	220V/60HZ	1	3	10.3	10419	3420	3.05	16.2	23.3	76	1.4	P22
YH104T3-100	220V/60HZ	1	3.5	12.4	12216	3900	3.13	18.5	26.0	109	1.6	P22
YH119T3-100	220V/60HZ	1	4	13.8	13704	4392	3.12	20.8	29.3	109	1.6	P23
YH128T3-100	220V/60HZ	1	4.3	14.9	14748	4644	3.18	22.1	31.6	140	1.6	P23
YH133T3-100	220V/60HZ	1	4.5	15.5	15324	4881	3.14	23.1	32.8	140	1.6	P23
YH140T3-100	220V/60HZ	1	4.6	16.2	16128	5137	3.14	24.3	34.5	140	1.6	P23
YH150T3-100	220V/60HZ	1	5	17.4	17280	5504	3.14	27.8	37.8	140	1.6	P23
220V 3 Phase/Fases 60Hz												R407C
YH69T7-100	220V/60HZ	3	2	8.0	7840	2590	3.02	9.6	12.7	99	1.4	P22
YH89T7-100	220V/60HZ	3	3	10.3	10250	3210	3.19	11.1	15.7	99	1.4	P22
YH104T7-100	220V/60HZ	3	3.5	12.4	12210	3830	3.19	13.6	17.0	136	1.6	P22
YH119T7-100	220V/60HZ	3	4	13.8	13700	4260	3.22	14.6	20.1	136	1.6	P22
YH128T7-100	220V/60HZ	3	4.3	14.9	14750	4490	3.28	15.0	20.6	136	1.6	P22
YH133T7-100	220V/60HZ	3	4.5	15.5	15320	4680	3.27	15.5	21.9	136	1.6	P22
YH140T7-100	220V/60HZ	3	4.6	16.2	16130	4960	3.25	16.8	23.0	136	1.6	P22
YH150T7-100	220V/60HZ	3	5	17.4	17280	5300	3.27	17.2	24.0	136	1.6	P22
YH175T7-100	220V/60HZ	3	6	20.3	19810	6040	3.28	18.8	28.2	167	1.6	P23
YH200T7-100	220V/60HZ	3	7	22.4	23424	7200	3.25	24.0	32.8	241	2.7	P24
YH230T7-100	220V/60HZ	3	8	25.7	27060	8192	3.30	26.9	36.8	241	2.7	P24
YH266T7-100	220V/60HZ	3	9	29.6	31147	9414	3.31	30.9	41.2	241	2.7	P24
YH307T7-100	220V/60HZ	3	10.5	34.9	35953	10781	3.33	32.5	47.0	290	2.7	P24
YH355T7-100	220V/60HZ	3	12	39.5	41578	12390	3.36	37.2	52.9	290	2.7	P24
380V 3 Phase/Fases 60Hz												R407C
YH69T5-100	380V/60HZ	3	2	8.0	7840	2590	3.02	5.6	7.4	51	1.4	P22
YH89T5-100	380V/60HZ	3	3	10.3	10250	3210	3.19	6.5	9.1	51	1.4	P22
YH104T5-100	380V/60HZ	3	3.5	12.4	12210	3830	3.19	7.9	10.4	69	1.6	P22
YH119T5-100	380V/60HZ	3	4	13.8	13700	4260	3.22	8.2	11.5	69	1.6	P22
YH128T5-100	380V/60HZ	3	4.3	14.9	14750	4490	3.28	8.7	11.9	69	1.6	P22
YH133T5-100	380V/60HZ	3	4.5	15.5	15320	4680	3.27	9.0	12.7	69	1.6	P22
YH140T5-100	380V/60HZ	3	4.6	16.2	16130	4960	3.25	9.7	13.3	69	1.6	P22
YH150T5-100	380V/60HZ	3	5	17.4	17280	5300	3.27	9.9	13.9	69	1.6	P22
YH175T5-100	380V/60HZ	3	6	20.3	19810	6040	3.28	10.9	16.4	94	1.6	P23
YH190T5-100	380V/60HZ	3	6.5	21.7	21660	6600	3.28	11.6	17.5	94	1.6	P23
YH200T5-100	380V/60HZ	3	7	22.4	23424	7200	3.25	13.9	19.0	135	2.7	P24
YH230T5-100	380V/60HZ	3	8	25.7	27060	8192	3.30	15.6	21.3	135	2.7	P24
YH266T5-100	380V/60HZ	3	9	29.6	31147	9414	3.31	17.9	23.8	135	2.7	P24
YH307T5-100	380V/60HZ	3	10.5	34.9	35953	10781	3.33	18.8	27.2	163	2.7	P24
YH355T5-100	380V/60HZ	3	12	39.5	41578	12390	3.36	21.5	30.6	163	2.7	P24

Cooling capacity @ ARI standard rating conditions: Evaporating temperature: 7.2°C (45°F), Condensing temperature: 54.4°C (130°F), Superheat 11.1K, sub-cooling 8.3K.

Capacidad de enfriamiento @ ARI Condiciones de calibración HT: Temperatura de evaporación: 7.2°C (45°F), Temperatura de condensación: 54.4°C (130°F), Supercalentamiento 11.1K, sub-enfriamiento 8.3K.

YH/YSH Series

R407C

A.C. Application
Aplicación de A.C.

Model Modelo	Electricity Electricidad (V/Hz)	Phase Fases (Ph)	Power Caballos de fuerza (HP)	Displ. Desp. (m³/h)	Capacity Capacidad (W)	Power in Watt Potencia en Watt (W)	COP (W/W)	Running Current Corriente de operación (A)	MOC (A)	LRA (A)	Initial Charge Volume Carga de volumen inicial (L)	Dimensions Dimensiones
460V 3 Phase/Fases 60Hz												R407C
YH69TI-100	460V/60HZ	3	2	8.0	7967	2614	3.05	4.8	6.2	45	1.4	P22
YH89TI-100	460V/60HZ	3	3	10.3	10419	3243	3.21	5.3	7.6	45	1.4	P22
YH104TI-100	460V/60HZ	3	3.5	12.4	12420	3860	3.22	6.6	8.7	60	1.4	P22
YH119TI-100	460V/60HZ	3	4	13.8	13932	4296	3.24	7.1	9.6	60	1.4	P22
YH128TI-100	460V/60HZ	3	4.3	14.9	14994	4538	3.30	7.6	10.2	60	1.4	P22
YH133TI-100	460V/60HZ	3	4.5	15.5	15579	4719	3.30	7.8	10.6	60	1.4	P22
YH140TI-100	460V/60HZ	3	4.6	16.2	16397	4997	3.28	8.0	11.1	60	1.4	P22
YH150TI-100	460V/60HZ	3	5	17.4	17568	5336	3.29	8.4	11.6	60	1.4	P22
YH175TI-100	460V/60HZ	3	6	20.3	20142	6086	3.31	9.1	13.6	65	1.6	P23
YH190TI-100	460V/60HZ	3	6.5	21.7	22021	6655	3.31	9.7	14.6	65	1.6	P23
YH200TI-100	460V/60HZ	3	7	22.4	23424	7200	3.25	11.5	15.7	117	2.7	P24
YH230TI-100	460V/60HZ	3	8	25.7	27060	8192	3.30	12.9	17.6	117	2.7	P24
YH266TI-100	460V/60HZ	3	9	29.6	31147	9414	3.31	14.8	19.7	117	2.7	P24
YH307TI-100	460V/60HZ	3	10.5	34.9	35953	10781	3.33	15.6	22.5	121	2.7	P24
YH355TI-100	460V/60HZ	3	12	39.5	41578	12390	3.36	17.8	25.3	121	2.7	P24
YSH400TIG-100	460V/60HZ	3	13	45.2	45504	14081	3.23	20.4	27.7	149	3.2	P32
YSH450TIG-100	460V/60HZ	3	15	51.0	50227	15774	3.18	22.8	31.6	149	3.2	P32
575V 3 Phase/Fases 60Hz												R407C
YH69T8-100	575V/60HZ	3	2	8.0	7840	2590	3.02	3.7	4.9	38	1.4	P22
YH89T8-100	575V/60HZ	3	3	10.3	10250	3210	3.19	4.3	6.0	38	1.4	P22
YH104T8-100	575V/60HZ	3	3.5	12.4	12210	3830	3.19	5.2	6.9	43	1.6	P22
YH119T8-100	575V/60HZ	3	4	13.8	13700	4260	3.22	5.4	7.6	43	1.6	P22
YH128T8-100	575V/60HZ	3	4.3	14.9	14750	4490	3.28	5.7	7.9	43	1.6	P22
YH133T8-100	575V/60HZ	3	4.5	15.5	15320	4680	3.27	5.9	8.4	43	1.6	P22
YH140T8-100	575V/60HZ	3	4.6	16.2	16130	4960	3.25	6.4	8.8	43	1.6	P22
YH150T8-100	575V/60HZ	3	5	17.4	17280	5300	3.27	6.5	9.2	43	1.6	P22
YH175T8-100	575V/60HZ	3	6	20.3	19810	6040	3.28	7.2	10.8	53	1.6	P23
YH200T8-100	575V/60HZ	3	7	22.4	23424	7200	3.25	9.2	12.6	80	2.7	P24
YH230T8-100	575V/60HZ	3	8	25.7	27060	8192	3.30	10.3	14.1	80	2.7	P24
YH266T8-100	575V/60HZ	3	9	29.6	31147	9414	3.31	11.8	15.8	80	2.7	P24
YH307T8-100	575V/60HZ	3	10.5	34.9	35953	10781	3.33	12.4	18.0	95	2.7	P24
YH355T8-100	575V/60HZ	3	12	39.5	41578	12390	3.36	14.2	20.2	95	2.7	P24

Cooling capacity @ ARI standard rating conditions: Evaporating temperature: 7.2°C (45°F), Condensing temperature: 54.4°C (130°F), Superheat 11.1K, sub-cooling 8.3K.

Capacidad de enfriamiento @ ARI Condiciones de calibración HT: Temperatura de evaporación: 7.2°C (45°F), Temperatura de condensación: 54.4°C (130°F), Supercalentamiento 11.1K, sub-enfriamiento 8.3K.

YH/YSH Series

R410A

A.C. Application
Aplicación de A.C.

Model Modelo	Electricity Electricidad (V/Hz)	Phase Fases (Ph)	Power Caballeros de fuerza (HP)	Displ. Desp. (m³/h)	Capacity Capacidad (W)	Power in Watt Potencia en Watt (W)	COP	Running Current Corriente de operación (A)	MOC (A)	LRA (A)	Initial Charge Volume Carga de volumen inicial (L)	Dimensions Dimensiones
220V 1 Phase/Fases 60Hz												R410A
YH95C3-100	220V/60HZ	1	3.5	7.0	11500	3733	3.08	17.3	24.0	109	1.4	P22
YH119C3-100	220V/60HZ	1	4	9.6	14280	4760	3.00	22.8	34.1	140	1.6	P23
YH128C3-100	220V/60HZ	1	4.3	10.3	15360	5120	3.00	24.5	36.7	140	1.6	P23
YH150C3-100	220V/60HZ	1	5	12.4	18000	5941	3.03	30.0	43.0	140	1.6	P23
220V 3 Phase/Fases 60Hz												R410A
YH95C7-100	220V/60HZ	3	3.5	8.0	11590	3836	3.02	12.1	15.7	99	1.4	P22
YH119C7-100	220V/60HZ	3	4	9.6	14518	4704	3.09	15.5	20.6	136	1.6	P22
YH128C7-100	220V/60HZ	3	4.3	10.3	15616	5061	3.09	16.1	22.2	136	1.6	P22
YH150C7-100	220V/60HZ	3	5	12.4	18300	5874	3.12	18.0	27.2	136	1.6	P22
YH175C7-100	220V/60HZ	3	6	13.8	21106	6709	3.15	20.3	28.2	167	1.6	P23
YH183C7-100	220V/60HZ	3	7	14.9	22330	7030	3.18	21.8	29.4	167	1.6	P24
YH230C7-100	220V/60HZ	3	8	19.0	28060	8724	3.22	28.0	38.2	241	2.7	P24
YH266C7-100	220V/60HZ	3	9	20.9	32452	10091	3.22	30.9	44.1	241	2.7	P24
YH292C7-100	220V/60HZ	3	10	22.4	35624	10970	3.25	33.0	49.3	290	2.7	P24
YH325C7-100	220V/60HZ	3	11	25.7	39650	12221	3.24	37.0	52.3	290	2.7	P24
YH355C7-100	220V/60HZ	3	12	27.5	42456	13068	3.25	38.0	56.0	290	2.7	P24
380V 3 Phase/Fases 60Hz												R410A
YH95C5-100	380V/60HZ	3	3.5	8.0	11590	3836	3.02	7.0	9.1	51	1.4	P22
YH119C5-100	380V/60HZ	3	4	9.6	14518	4704	3.09	9.0	11.9	69	1.6	P22
YH128C5-100	380V/60HZ	3	4.3	10.3	15616	5061	3.09	9.3	12.8	69	1.6	P22
YH150C5-100	380V/60HZ	3	5	12.4	18300	5874	3.12	10.4	15.7	69	1.6	P22
YH175C5-100	380V/60HZ	3	6	13.8	21106	6709	3.15	11.7	16.3	94	1.6	P23
YH183C5-100	380V/60HZ	3	7	14.9	22330	7030	3.18	12.6	17.0	94	1.6	P24
YH230C5-100	380V/60HZ	3	8	19.0	28060	8724	3.22	16.2	22.1	135	2.7	P24
YH266C5-100	380V/60HZ	3	9	20.9	32452	10091	3.22	17.9	25.5	135	2.7	P24
YH292C5-100	380V/60HZ	3	10	22.4	35624	10970	3.25	19.1	28.6	163	2.7	P24
YH325C5-100	380V/60HZ	3	11	25.7	39650	12221	3.24	21.4	30.3	163	2.7	P24
YH385C5-100	380V/60HZ	3	13	29.6	46970	14334	3.28	24.3	34.4	163	2.7	P24
YH355C5-100	380V/60HZ	3	12	27.5	42456	13068	3.25	22.0	32.4	163	2.7	P24
YSH450C5G-100	380V/60HZ	3	15	34.9	53400	16952	3.15	29.4	43.2	180	3.2	P32

Cooling capacity @ ARI standard rating conditions: Evaporating temperature: 7.2°C (45°F), Condensing temperature: 54.4°C (130°F), Superheat 11.1K, sub-cooling 8.3K.
Capacidad de enfriamiento @ ARI Condiciones de calibración HT: Temperatura de evaporación: 7.2°C (45°F), Temperatura de condensación: 54.4°C (130°F), Supercalentamiento 11.1K, sub-enfriamiento 8.3K.

YH/YSH Series

R410A

A.C. Application
Aplicación de A.C.

Model Modelo	Electricity Electricidad (V/Hz)	Phase Fases (Ph)	Power Caballos de fuerza (HP)	Displ. Desp. (m³/h)	Capacity Capacidad (W)	Power in Watt Potencia en Watt (W)	COP (W/W)	Running Current Corriente de operación (A)	MOC (A)	LRA (A)	Initial Charge Volume Carga de volumen inicial (L)	Dimensions Dimensiones
460V 3 Phase/Fases 60Hz												R410A
YH95CI-100	460V/60HZ	3	3.5	8.0	11590	3836	3.02	5.8	7.5	45	1.4	P22
YH119CI-100	460V/60HZ	3	4	9.6	14518	4704	3.09	7.4	9.9	60	1.4	P22
YH128CI-100	460V/60HZ	3	5	10.3	15616	5061	3.09	7.7	10.6	60	1.4	P22
YH150CI-100	460V/60HZ	3	5	12.4	18300	5874	3.12	8.6	13.0	60	1.4	P22
YH175CI-100	460V/60HZ	3	6	13.8	21106	6709	3.15	9.7	13.5	65	1.6	P23
YH183CI-100	460V/60HZ	3	6.5	14.9	22326	7030	3.18	10.4	14.0	65	1.6	P23
YH230CI-100	460V/60HZ	3	8	19.0	28060	8724	3.22	13.4	18.3	117	2.7	P24
YH266CI-100	460V/60HZ	3	9	20.9	32452	10091	3.22	14.8	21.1	117	2.7	P24
YH292CI-100	460V/60HZ	3	10	22.4	35624	10975	3.25	15.8	23.6	121	2.7	P24
YH325CI-100	460V/60HZ	3	11	25.7	39650	12221	3.24	17.7	25.0	121	2.7	P24
YH355CI-100	460V/60HZ	3	12	27.5	42456	13068	3.25	18.2	26.8	121	2.7	P24
YSH400CI-100	460V/60HZ	3	14	30.4	47400	15173	3.12	22.3	32.5	149	3.2	P32
YSH450CI-100	460V/60HZ	3	15	34.9	53400	17094	3.12	24.7	36.0	149	3.2	P32
575V 3 Phase/Fases 60Hz												R410A
YH95C8-100	575V/60HZ	3	3.5	8.0	11590	3836	3.02	4.6	6.0	38	1.4	P22
YH119C8-100	575V/60HZ	3	4	9.6	14518	4704	3.09	5.9	7.9	43	1.6	P22
YH128C8-100	575V/60HZ	3	4.3	10.3	15616	5061	3.09	6.2	8.5	43	1.6	P22
YH150C8-100	575V/60HZ	3	5	12.4	18300	5874	3.12	6.9	10.4	43	1.6	P22
YH175C8-100	575V/60HZ	3	6	13.8	21106	6709	3.15	7.8	10.8	53	1.6	P23
YH183C8-100	575V/60HZ	3	7	14.9	22330	7030	3.18	8.3	11.2	53	1.6	P24
YH230C8-100	575V/60HZ	3	8	19.0	28060	8724	3.22	10.7	14.6	80	2.7	P24
YH266C8-100	575V/60HZ	3	9	20.9	32452	10091	3.22	11.8	16.9	80	2.7	P24
YH292C8-100	575V/60HZ	3	10	22.4	35624	10970	3.25	12.6	18.9	95	2.7	P24
YH325C8-100	575V/60HZ	3	11	25.7	39650	12221	3.24	14.2	20.0	95	2.7	P24
YH385C8-100	575V/60HZ	3	13	29.6	46970	14334	3.28	16.1	22.7	163	2.7	P24
YH355C8-100	575V/60HZ	3	12	27.5	42456	13068	3.25	14.6	21.4	95	2.7	P24

Cooling capacity @ ARI standard rating conditions: Evaporating temperature: 7.2°C (45°F), Condensing temperature: 54.4°C (130°F), Superheat 11.1K, sub-cooling 8.3K.

Capacidad de enfriamiento @ ARI Condiciones de calibración HT: Temperatura de evaporación: 7.2°C (45°F), Temperatura de condensación: 54.4°C (130°F), Supercalentamiento 11.1K, sub-enfriamiento 8.3K.

YM/YSM Series

R22

Middle Temperature Refrigeration Application
Aplicación de media y baja temperatura

Model Modelo	Electricity Electricidad (V/Hz)	Phase Fases (Ph)	Power Caballos de fuerza (HP)	Displ. Desp. (m³/h)	Capacity Capacidad (W)	Power in Watt Potencia en Watt (W)	COP (W/W)	Running Current Corriente de operación (A)	MOC (A)	LRA (A)	Initial Charge Volume Carga de volumen inicial (L)	Dimensions Dimensiones
220V 1 Phase/Fases 60Hz												R22
YM34A3G-100	220V/60HZ	1	2	7.0	4320	2184	1.98	10.3	18.2	76	1.4	P25
YM43A3G-100	220V/60HZ	1	2.5	8.8	5160	2556	2.02	12.1	19.5	76	1.4	P25
YM49A3G-100	220V/60HZ	1	3	9.7	5880	2840	2.07	13.4	20.5	76	1.4	P25
YM70A3G-100	220V/60HZ	1	4	14.2	8400	4000	2.10	19.1	32.0	140	1.6	P26
YM86A3G-100	220V/60HZ	1	5	17.4	10320	4914	2.10	23.5	37.1	140	1.6	P26
220V 3 Phase/Fases 60Hz												R22
YM34A7G-100	220V/60HZ	3	2	7.0	4320	2160	2.00	8.6	10.2	99	1.4	P25
YM43A7G-100	220V/60HZ	3	2.5	8.8	5200	2500	2.08	9.3	12.7	99	1.4	P25
YM49A7G-100	220V/60HZ	3	3	9.7	5930	2770	2.14	10.0	13.5	99	1.4	P25
YM70A7G-100	220V/60HZ	3	4	14.2	8470	3840	2.21	13.2	20.1	136	1.6	P25
YM86A7G-100	220V/60HZ	3	5	17.4	10320	4490	2.30	15.7	23.8	136	1.6	P25
YM102A7G-100	220V/60HZ	3	6	20.5	12340	5450	2.26	17.5	27.9	167	1.6	P26
YM125A7G-100	220V/60HZ	3	7	24.1	15250	6570	2.32	23.0	34.1	241	2.7	P27
YM132A7G-100	220V/60HZ	3	8	25.7	16104	6884	2.34	23.4	36.4	241	2.7	P27
YM158A7G-100	220V/60HZ	3	9	30.4	19276	8240	2.34	26.5	41.4	241	2.7	P27
YM182A7G-100	220V/60HZ	3	10	34.9	22204	9371	2.37	28.9	46.6	290	2.7	P27
YM200A7G-100	220V/60HZ	3	12	39.5	24400	10297	2.37	31.8	52.3	290	2.7	P27
YM210A7G-100	220V/60HZ	3	13	41.2	25620	10721	2.39	32.8	54.3	290	2.7	P27
380V 3 Phase/Fases 60Hz												R22
YM34A5G-100	380V/60HZ	3	2	7.0	4320	2160	2.00	4.6	5.9	51	1.4	P25
YM43A5G-100	380V/60HZ	3	2.5	8.8	5200	2500	2.08	5.0	7.4	51	1.4	P25
YM49A5G-100	380V/60HZ	3	3	9.7	5930	2770	2.14	5.4	7.8	51	1.4	P25
YM70A5G-100	380V/60HZ	3	4	14.2	8470	3840	2.21	7.5	11.7	69	1.6	P25
YM86A5G-100	380V/60HZ	3	5	17.4	10320	4490	2.30	9.2	13.8	69	1.6	P25
YM102A5G-100	380V/60HZ	3	6	20.5	12340	5450	2.26	9.9	16.2	94	1.6	P26
YM125A5G-100	380V/60HZ	3	7	24.1	15250	6570	2.32	13.3	19.7	135	2.7	P27
YM132A5G-100	380V/60HZ	3	8	25.7	16104	6884	2.34	13.6	21.1	135	2.7	P27
YM158A5G-100	380V/60HZ	3	9	30.4	19276	8240	2.34	15.4	24.0	135	2.7	P27
YM182A5G-100	380V/60HZ	3	10	34.9	22204	9371	2.37	16.8	27.0	163	2.7	P27
YM200A5G-100	380V/60HZ	3	12	39.5	24400	10297	2.37	18.4	30.3	163	2.7	P27
YM210A5G-100	380V/60HZ	3	13	41.2	25620	10721	2.39	19.0	31.5	163	2.7	P27
YSM235A5G-100	380V/60HZ	3	14	45.2	28200	12540	2.25	22.9	32.9	180	3.2	P32
YSM260A5G-100	380V/60HZ	3	15	51.0	31200	13872	2.25	24.8	37.6	180	3.2	P32

Cooling capacity @ ARI540 MT standard rating conditions: Evaporating temperature: -6.7°C (20°F), Condensing temperature: 48.9°C (120°F), Superheat 25K, no sub-cooling.
Capacidad de enfriamiento @ ARI540 MT Condiciones de calibración estándar: Temperatura de evaporación: -6.7°C (20°F), Temperatura de condensación: 48.9°C (120°F),
Supercalentamiento 25K, sin subenfriamiento.

R22

YM/YSM Series

Middle Temperature Refrigeration Application
Aplicación de media y baja temperatura

Model Modelo	Electricity Electricidad (V/Hz)	Phase Fases (Ph)	Power Caballos de fuerza (HP)	Displ. Desp. (m³/h)	Capacity Capacidad (W)	Power in Watt Potencia en Watt (W)	COP (W/W)	Running Current Corriente de operación (A)	MOC (A)	LRA (A)	Initial Charge Volume Carga de volumen inicial (L)	Dimensions Dimensiones
460V 3 Phase/Fases 60Hz												R22
YM34AIG-100	460V/60HZ	3	2	7.0	4320	2160	2.00	3.2	4.9	22	1.4	P25
YM43AIG-100	460V/60HZ	3	2.5	8.8	5200	2500	2.08	4.7	6.1	45	1.4	P25
YM49AIG-100	460V/60HZ	3	3	9.7	5930	2770	2.14	4.9	6.5	45	1.4	P25
YM70AIG-100	460V/60HZ	3	4	14.2	8470	3840	2.21	6.4	9.7	60	1.4	P25
YM86AIG-100	460V/60HZ	3	5	17.4	10320	4490	2.30	7.6	11.5	60	1.4	P25
YM102AIG-100	460V/60HZ	3	6	20.5	12340	5450	2.26	8.5	13.5	65	1.6	P26
YM125AIG-00	460V/60HZ	3	7	24.1	15250	6570	2.32	11.0	16.3	117	2.7	P27
YM132AIG-100	460V/60HZ	3	8	25.7	16104	6884	2.34	11.2	17.4	117	2.7	P27
YM158AIG-100	460V/60HZ	3	9	30.4	19276	8240	2.34	12.7	19.8	117	2.7	P27
YM182AIG-100	460V/60HZ	3	10	34.9	22204	9371	2.37	13.6	22.3	121	2.7	P27
YM200AIG-100	460V/60HZ	3	12	39.5	24400	10297	2.37	14.9	25.0	121	2.7	P27
YM210AIG-100	460V/60HZ	3	13	41.2	25620	10721	2.39	15.7	26.0	121	2.7	P27
YSM235AIG-100	460V/60HZ	3	14	37.7	28200	12540	2.25	19.1	27.4	149	3.2	P32
YSM260AIG-100	460V/60HZ	3	15	42.5	31200	13872	2.25	20.7	31.3	149	3.2	P32
575V 3 Phase/Fases 60Hz												R22
YM34A8G-100	575V/60HZ	3	2	7.0	4320	2160	2.00	3.0	3.9	38	1.4	P25
YM43A8G-100	575V/60HZ	3	2.5	8.8	5200	2500	2.08	3.3	4.9	38	1.4	P25
YM49A8G-100	575V/60HZ	3	3	9.7	5930	2770	2.14	3.6	5.2	38	1.4	P25
YM70A8G-100	575V/60HZ	3	4	14.2	8470	3840	2.21	5.0	7.7	43	1.6	P25
YM86A8G-100	575V/60HZ	3	5	17.4	10320	4490	2.30	6.1	9.1	43	1.6	P25
YM102A8G-100	575V/60HZ	3	6	20.5	12340	5450	2.26	6.6	10.7	53	1.6	P26
YM125A8G-100	575V/60HZ	3	7	24.1	15250	6570	2.32	8.8	13.0	80	2.7	P27
YM132A8G-100	575V/60HZ	3	8	25.7	16104	6884	2.34	9.0	13.9	80	2.7	P27
YM158A8G-100	575V/60HZ	3	9	30.4	19276	8240	2.34	10.2	15.8	80	2.7	P27
YM182A8G-100	575V/60HZ	3	10	34.9	22204	9371	2.37	11.1	17.8	95	2.7	P27
YM200A8G-100	575V/60HZ	3	12	39.5	24400	10297	2.37	12.2	20.0	95	2.7	P27
YM210A8G-100	575V/60HZ	3	13	41.2	25620	10721	2.39	12.6	20.8	95	2.7	P27

Cooling capacity @ ARI540 MT standard rating conditions: Evaporating temperature: -6.7°C (20°F), Condensing temperature: 48.9°C (120°F), Superheat 25K, no sub-cooling.
 Capacidad de enfriamiento @ ARI540 MT Condiciones de calibración estándar: Temperatura de evaporación: -6.7°C (20°F), Temperatura de condensación: 48.9°C (120°F),
 Supercalentamiento 25K, sin subenfriamiento.

YM/YSM Series

R404A

Middle Temperature Refrigeration Application
Aplicación de media y baja temperatura

Model Modelo	Electricity Electricidad (V/Hz)	Phase Fases (Ph)	Power Caballos de fuerza (HP)	Displ. Desp. (m³/h)	Capacity Capacidad (W)	Power in Watt Potencia en Watt (W)	COP (W/W)	Running Current Corriente de operación (A)	MOC (A)	LRA (A)	Initial Charge Volume Carga de volumen inicial (L)	Dimensions Dimensiones
220V 1 Phase/Fases 60Hz												R404A
YM34E3G-100	220V/60HZ	1	2	7.0	4272	2373	1.72	11.2	19.5	76	1.4	P25
YM43E3G-100	220V/60HZ	1	2.5	8.8	5100	2833	1.76	13.4	20.7	76	1.4	P25
YM49E3G-100	220V/60HZ	1	3	9.7	5808	3227	1.80	15.3	21.8	76	1.4	P25
YM70E3G-100	220V/60HZ	1	4	14.2	8304	4489	1.85	21.5	34.0	140	1.6	P26
YM86E3G-100	220V/60HZ	1	5	17.4	10200	5514	1.85	26.4	40.1	140	1.6	P26
220V 3 Phase/Fases 60Hz												R404A
YM34E7G-100	220V/60HZ	3	2	7.0	4343	2482	1.75	9.1	10.8	99	1.4	P25
YM43E7G-100	220V/60HZ	3	2.5	8.8	5185	2803	1.85	10.0	13.3	99	1.4	P25
YM49E7G-100	220V/60HZ	3	3	9.7	5904.8	3108	1.90	10.4	14.3	99	1.4	P25
YM70E7G-100	220V/60HZ	3	4	14.2	8442.4	4397	1.92	14.3	21.8	136	1.6	P25
YM86E7G-100	220V/60HZ	3	5	17.4	10305	5153	2.00	16.6	25.2	136	1.6	P25
YM102E7G-100	220V/60HZ	3	6	20.5	12322	6161	2.00	19.3	29.4	167	1.6	P26
YM125E7G-100	220V/60HZ	3	7	24.1	14933	7345	2.03	24.7	36.2	241	2.7	P27
YM132E7G-100	220V/60HZ	3	8	25.7	15729	7659	2.05	25.3	38.5	241	2.7	P27
YM158E7G-100	220V/60HZ	3	9	30.4	19327	9396	2.06	28.4	43.9	241	2.7	P27
YM182E7G-100	220V/60HZ	3	10	34.9	21784	10517	2.07	32.5	49.3	290	2.7	P27
YM200E7G-100	220V/60HZ	3	12	39.5	23834	11507	2.07	35.5	55.4	290	2.7	P27
YM210E7G-100	220V/60HZ	3	13	41.2	25064	12040	2.08	36.4	57.7	290	2.7	P27
380V 3 Phase/Fases 60Hz												R404A
YM34E5G-100	380V/60HZ	3	2	7.0	4343	2482	1.75	4.9	6.3	51	1.4	P25
YM43E5G-100	380V/60HZ	3	2.5	8.8	5185	2803	1.85	5.4	7.7	51	1.4	P25
YM49E5G-100	380V/60HZ	3	3	9.7	5905	3108	1.90	5.7	8.3	51	1.4	P25
YM70E5G-100	380V/60HZ	3	4	14.2	8442	4397	1.92	8.2	12.6	69	1.6	P25
YM86E5G-100	380V/60HZ	3	5	17.4	10305	5153	2.00	9.6	14.6	69	1.6	P25
YM102E5G-100	380V/60HZ	3	6	20.5	12322	6161	2.00	11.0	17.0	94	1.6	P26
YM125E5G-100	380V/60HZ	3	7	24.1	14933	7345	2.03	14.3	20.9	135	2.7	P27
YM132E5G-100	380V/60HZ	3	8	25.7	15729	7659	2.05	14.6	22.3	135	2.7	P27
YM158E5G-100	380V/60HZ	3	9	30.4	19327	9396	2.06	16.5	25.4	135	2.7	P27
YM182E5G-100	380V/60HZ	3	10	34.9	21784	10517	2.07	18.8	28.6	163	2.7	P27
YM200E5G-100	380V/60HZ	3	12	39.5	23834	11507	2.07	20.6	32.1	163	2.7	P27
YM210E5G-100	380V/60HZ	3	13	41.2	25064	12040	2.08	21.1	33.4	163	2.7	P27
YSM235E5G-100	380V/60HZ	3	14	45.2	27862	14280	1.95	25.8	34.7	180	3.2	P32
YSM260E5G-100	380V/60HZ	3	15	51.0	30826	15780	1.95	27.6	39.4	180	3.2	P32

Cooling capacity @ ARI540 MT standard rating conditions: Evaporating temperature: -6.7°C (20°F), Condensing temperature: 48.9°C (120°F), Superheat 25K, no sub-cooling.
Capacidad de enfriamiento @ ARI540 MT Condiciones de calibración estándar: Temperatura de evaporación: -6.7°C (20°F), Temperatura de condensación: 48.9°C (120°F),
Supercalentamiento 25K, sin subenfriamiento.

YM/YSM Series

R404A

Middle Temperature Refrigeration Application
Aplicación de media y baja temperatura

Model Modelo	Electricity Electricidad (V/Hz)	Phase Fases (Ph)	Power Caballos de fuerza (HP)	Displ. Desp. (m³/h)	Capacity Capacidad (W)	Power in Watt Potencia en Watt (W)	COP (W/W)	Running Current Corriente de operación (A)	MOC (A)	LRA (A)	Initial Charge Volume Carga de volumen inicial (L)	Dimensions Dimensiones
460V 3 Phase/Fases 60Hz												R404A
YM34EIG-100	460V/60HZ	3	2	7.0	4343	2482	1.75	3.5	5.2	22	1.4	P25
YM43EIG-100	460V/60HZ	3	2.5	8.8	5185	2803	1.85	4.8	6.4	45	1.4	P25
YM49EIG-100	460V/60HZ	3	3	9.7	5905	3108	1.90	5.1	6.9	45	1.4	P25
YM70EIG-100	460V/60HZ	3	4	14.2	8442	4397	1.92	7.0	10.5	60	1.4	P25
YM86EIG-100	460V/60HZ	3	5	17.4	10305	5153	2.00	8.0	12.2	60	1.4	P25
YM102EIG-100	460V/60HZ	3	6	20.5	12322	6161	2.00	9.4	14.3	65	1.4	P26
YM125EIG-100	460V/60HZ	3	7	24.1	14933	7345	2.03	11.8	17.5	117	2.7	P27
YM132EIG-100	460V/60HZ	3	8	25.7	15729	7659	2.05	12.1	18.4	117	2.7	P27
YM158EIG-100	460V/60HZ	3	9	30.4	19327	9396	2.06	13.6	21.0	117	2.7	P27
YM182EIG-100	460V/60HZ	3	10	34.9	21784	10517	2.07	15.5	23.6	121	2.7	P27
YM200EIG-100	460V/60HZ	3	12	39.5	23834	11507	2.07	16.3	26.5	121	2.7	P27
YM210EIG-100	460V/60HZ	3	13	41.2	25064	12040	2.08	16.9	27.6	121	2.7	P27
YSM235EIG-100	460V/60HZ	3	14	37.7	27862	14280	1.95	21.5	28.9	149	3.2	P32
YSM260EIG-100	460V/60HZ	3	15	42.5	30826	15780	1.95	23.0	32.8	149	3.2	P32
575V 3 Phase/Fases 60Hz												R404A
YM34E8G-100	575V/60HZ	3	2	7.0	4343	2482	1.75	3.2	4.2	38	1.4	P25
YM43E8G-100	575V/60HZ	3	2.5	8.8	5185	2803	1.85	3.5	5.1	38	1.4	P25
YM49E8G-100	575V/60HZ	3	3	9.7	5905	3108	1.90	3.8	5.5	38	1.4	P25
YM70E8G-100	575V/60HZ	3	4	14.2	8442	4397	1.92	5.4	8.3	43	1.6	P25
YM86E8G-100	575V/60HZ	3	5	17.4	10305	5153	2.00	6.3	9.6	43	1.6	P25
YM102E8G-100	575V/60HZ	3	6	20.5	12322	6161	2.00	7.3	11.2	53	1.6	P26
YM125E8G-100	575V/60HZ	3	7	24.1	14933	7345	2.03	9.4	13.8	80	2.7	P27
YM132E8G-100	575V/60HZ	3	8	25.7	15729	7659	2.05	9.7	14.7	80	2.7	P27
YM158E8G-100	575V/60HZ	3	9	30.4	19327	9396	2.06	10.9	16.8	80	2.7	P27
YM182E8G-100	575V/60HZ	3	10	34.9	21784	10517	2.07	12.4	18.9	95	2.7	P27
YM200E8G-100	575V/60HZ	3	12	39.5	23834	11507	2.07	13.6	21.2	95	2.7	P27
YM210E8G-100	575V/60HZ	3	13	41.2	25064	12040	2.08	13.9	22.1	95	2.7	P27

Cooling capacity @ ARI540 MT standard rating conditions: Evaporating temperature: -6.7°C (20°F), Condensing temperature: 48.9°C (120°F), Superheat 25K, no sub-cooling.
Capacidad de enfriamiento @ ARI540 MT Condiciones de calibración estándar: Temperatura de evaporación: -6.7°C (20°F), Temperatura de condensación: 48.9°C (120°F), Supercalentamiento 25K, sin subenfriamiento.

YF/YSF Series

Liquid Injection / Inyección de líquidos

R22

Low Temperature Refrigeration Application
Aplicación de baja temperatura

Model Modelo	Electricity Electricidad (V/Hz)	Phase Fases (Ph)	Power Caballos de fuerza (HP)	Displ. Desp. (m³/h)	Capacity Capacidad (W)	Power in Watt Potencia en Watt (W)	COP (W/W)	Running Current Corriente de operación (A)	MOC (A)	LRA (A)	Initial Charge Volume Carga de volumen inicial (L)	Dimensions Dimensiones
220V 1 Phase/Fases 60Hz												R22
YF13A3G-Q100	220V/60HZ	1	2	7.0	1560	1420	1.10	6.7	15.1	76	1.4	P28
YF17A3G-Q100	220V/60HZ	1	2.5	8.8	1990	1800	1.11	8.5	16.1	76	1.4	P28
YF20A3G-Q100	220V/60HZ	1	3	9.7	2340	2100	1.11	9.9	18.4	76	1.4	P28
YF29A3G-Q100	220V/60HZ	1	4	14.2	3540	2892	1.22	13.7	26.4	109	1.6	P28
YF35A3G-Q100	220V/60HZ	1	5	17.4	4200	3382	1.24	17.1	29.9	140	1.6	P29
220V 3 Phase/Fases 60Hz												R22
YF13A7G-Q100	220V/60HZ	3	2	7.0	1586	1404	1.13	6.6	8.8	99	1.4	P28
YF17A7G-Q100	220V/60HZ	3	2.5	8.8	2025	1779	1.14	7.2	10.6	99	1.4	P28
YF20A7G-Q100	220V/60HZ	3	3	9.7	2379	2069	1.15	9.1	11.5	99	1.4	P28
YF29A7G-Q100	220V/60HZ	3	4	14.2	3599	2856	1.26	10.4	17.5	136	1.6	P28
YF35A7G-Q100	220V/60HZ	3	5	17.4	4270	3279	1.30	13.2	20.5	136	1.6	P28
YF41A7G-Q100	220V/60HZ	3	6	20.5	5002	3812	1.31	13.6	24.0	136	1.6	P29
380V 3 Phase/Fases 60Hz												R22
YF13A5G-Q100	380V/60HZ	3	2	7.0	1586	1404	1.13	3.8	5.1	51	1.4	P28
YF17A5G-Q100	380V/60HZ	3	2.5	8.8	2025	1779	1.14	4.2	6.1	51	1.4	P28
YF20A5G-Q100	380V/60HZ	3	3	9.7	2379	2069	1.15	5.2	6.7	51	1.4	P28
YF29A5G-Q100	380V/60HZ	3	4	14.2	3599	2856	1.26	6.0	10.1	69	1.4	P28
YF35A5G-Q100	380V/60HZ	3	5	17.4	4270	3279	1.30	7.7	11.9	69	1.4	P28
YF41A5G-Q100	380V/60HZ	3	6	20.5	5002	3812	1.31	7.9	13.9	69	1.4	P28
460V 3 Phase/Fases 60Hz												R22
YF13A1G-Q100	460V/60HZ	3	2	7.0	1586	1404	1.13	2.3	3.6	22	1.4	P28
YF17A1G-Q100	460V/60HZ	3	2.5	8.8	2025	1779	1.14	2.7	4.2	22	1.4	P28
YF20A1G-Q100	460V/60HZ	3	3	9.7	2379	2069	1.15	4.3	5.5	45	1.4	P28
YF29A1G-Q100	460V/60HZ	3	4	14.2	3599	2856	1.26	5.0	8.4	60	1.4	P28
YF35A1G-Q100	460V/60HZ	3	5	17.4	4270	3279	1.30	6.3	9.8	60	1.4	P28
YF41A1G-Q100	460V/60HZ	3	6	20.5	5002	3812	1.31	6.5	11.5	65	1.6	P29

Cooling capacity @ ARI540 LT standard rating conditions: Evaporating temperature: -31.7°C (-25°F), Condensing temperature: 40.6°C (105°F), Superheat 50K, no sub-cooling.
Capacidad de enfriamiento @ ARI540 LT Condiciones de calibración estándar: Temperatura de evaporación: -31.7°C (-25°F), Temperatura de condensación: 40.6°C (105°F),
Supercalentamiento 50K, sin subenfriamiento.

YF/YSF Series

R22

Low Temperature Refrigeration Application
Aplicación de baja temperatura

Vapor Injection / Inyección de Vapor

Model Modelo	Electricity Electricidad (V/Hz)	Phase Fases (Ph)	Power Caballos de fuerza (HP)	Displ. Desp. (m³/h)	Capacity Capacidad (W)	Power in Watt Potencia en Watt (W)	COP (W/W)	Running Current Corriente de operación (A)	MOC (A)	LRA (A)	Initial Charge Volume Carga de volumen inicial (L)	Dimensions Dimensiones
220V 1 Phase/Fases 60Hz												R22
YF13A3G-V100	220V/60HZ	1	2	7.0	2230	1910	1.17	9.0	15.1	76	1.4	P28
YF17A3G-V100	220V/60HZ	1	2.5	8.8	2500	2060	1.21	9.8	16.1	76	1.4	P28
YF20A3G-V100	220V/60HZ	1	3	9.7	2920	2400	1.22	11.4	18.4	76	1.4	P28
YF29A3G-V100	220V/60HZ	1	4	14.2	4464	3408	1.31	16.1	26.4	109	1.6	P28
YF35A3G-V100	220V/60HZ	1	5	17.4	5376	4093	1.31	20.7	29.9	140	1.6	P29
220V 3 Phase/Fases 60Hz												R22
YF13A7G-V100	220V/60HZ	3	2	7.0	2269	1876	1.21	7.4	8.8	99	1.4	P28
YF17A7G-V100	220V/60HZ	3	2.5	8.8	2538	2045	1.24	7.7	10.6	99	1.4	P28
YF20A7G-V100	220V/60HZ	3	3	9.7	2977	2372	1.26	9.9	11.5	99	1.4	P28
YF29A7G-V100	220V/60HZ	3	4	14.2	4538	3364	1.35	11.6	17.5	136	1.6	P28
YF35A7G-V100	220V/60HZ	3	5	17.4	5466	3969	1.38	14.7	20.5	136	1.6	P28
YF41A7G-V100	220V/60HZ	3	6	20.5	6588	4538	1.45	15.5	24.0	136	1.6	P29
YSF60A7G-V100	220V/60HZ	3	7	24.1	7320	5046	1.45	19.2	36.8	241	2.7	P30
YSF65A7G-V100	220V/60HZ	3	8	25.7	7808	5385	1.45	20.1	39.7	241	2.7	P30
YSF75A7G-V100	220V/60HZ	3	9	30.4	9028	6135	1.47	21.7	46.0	241	2.7	P30
YSF85A7G-V100	220V/60HZ	3	10	34.9	10346	7018	1.47	23.4	52.3	241	2.7	P30
YSF90A7G-V100	220V/60HZ	3	12	39.5	11590	7768	1.49	25.3	58.5	241	2.7	P30
YSF100A7G-V100	220V/60HZ	3	13	41.2	12200	8180	1.49	26.3	51.6	241	2.7	P30
380V 3 Phase/Fases 60Hz												R22
YF13A5G-V100	380V/60HZ	3	2	7.0	2269	1876	1.21	4.3	5.1	51	1.4	P28
YF17A5G-V100	380V/60HZ	3	2.5	8.8	2538	2045	1.24	4.4	6.1	51	1.4	P28
YF20A5G-V100	380V/60HZ	3	3	9.7	2977	2372	1.26	5.7	6.7	51	1.4	P28
YF29A5G-V100	380V/60HZ	3	4	14.2	4538	3364	1.35	6.7	10.1	69	1.6	P28
YF35A5G-V100	380V/60HZ	3	5	17.4	5466	3969	1.38	8.5	11.9	69	1.6	P28
YF41A5G-V100	380V/60HZ	3	6	20.5	6588	4538	1.45	9.0	13.9	69	1.6	P29
YSF60A5G-V100	380V/60HZ	3	7	24.1	7320	5046	1.45	11.1	21.3	135	2.7	P30
YSF65A5G-V100	380V/60HZ	3	8	25.7	7808	5385	1.45	11.6	23.0	135	2.7	P30
YSF75A5G-V100	380V/60HZ	3	9	30.4	9028	6135	1.47	12.6	26.6	135	2.7	P30
YSF85A5G-V100	380V/60HZ	3	10	34.9	10346	7018	1.47	13.6	30.3	135	2.7	P30
YSF90A5G-V100	380V/60HZ	3	12	39.5	11590	7768	1.49	14.6	33.9	135	2.7	P30
YSF100A5G-V100	380V/60HZ	3	13	41.2	12200	8180	1.49	15.2	29.9	135	2.7	P30

Cooling capacity @ ARI540 LT standard rating conditions: Evaporating temperature: -31.7°C (-25°F), Condensing temperature: 40.6°C (105°F), Superheat 50K, no sub-cooling.
Capacidad de enfriamiento @ ARI540 LT Condiciones de calibración estándar: Temperatura de evaporación: -31.7°C (-25°F), Temperatura de condensación: 40.6°C (105°F), Supercalentamiento 50K, sin subenfriamiento.

YF/YSF Series

Vapor Injection / Inyección de Vapor

R22

Low Temperature Refrigeration Application
Aplicación de baja temperatura

Model Modelo	Electricity Electricidad (V/Hz)	Phase Fases (Ph)	Power Caballos de fuerza (HP)	Displ. Desp. (m³/h)	Capacity Capacidad (W)	Power in Watt Potencia en Watt (W)	COP (W/W)	Running Current Corriente de operación (A)	MOC (A)	LRA (A)	Initial Charge Volume Carga de volumen inicial (L)	Dimensions Dimensiones
460V 3 Phase/Fases 60Hz												R22
YF13AIG-V100	460V/60HZ	3	2	7.0	2269	1876	1.21	2.8	3.6	22	1.4	P28
YF17AIG-V100	460V/60HZ	3	2.5	8.8	2538	2045	1.24	3.0	4.2	22	1.4	P28
YF20AIG-V100	460V/60HZ	3	3	9.7	2977	2372	1.26	4.7	5.5	45	1.4	P28
YF29AIG-V100	460V/60HZ	3	4	14.2	4538	3364	1.35	5.6	8.4	60	1.4	P28
YF35AIG-V100	460V/60HZ	3	5	17.4	5466	3969	1.38	7.0	9.8	60	1.4	P28
YF41AIG-V100	460V/60HZ	3	6	20.5	6588	4538	1.45	7.4	11.5	65	1.6	P29
YSF60A4G-V100	460V/60HZ	3	7	24.1	7320	5046	1.45	9.2	17.6	117	2.7	P30
YSF65A4G-V100	460V/60HZ	3	8	25.7	7808	5385	1.45	9.6	19.0	117	2.7	P30
YSF75A4G-V100	460V/60HZ	3	9	30.4	9028	6135	1.47	10.4	22.0	117	2.7	P30
YSF85A4G-V100	460V/60HZ	3	10	34.9	10346	7018	1.47	11.2	25.0	117	2.7	P30
YSF90A4G-V100	460V/60HZ	3	12	39.5	11590	7768	1.49	12.1	28.0	117	2.7	P30
YSF100A4G-V100	460V/60HZ	3	13	41.2	12200	8180	1.49	12.6	24.7	117	2.7	P30
YSF125A4G-V100	460V/60HZ	3	15	50.9	14640	10457	1.40	16.7	30.4	149	3.2	P31

Cooling capacity @ ARI540 LT standard rating conditions: Evaporating temperature: -31.7°C (-25°F), Condensing temperature: 40.6°C (105°F), Superheat 50K, no sub-cooling.
Capacidad de enfriamiento @ ARI540 LT Condiciones de calibración estándar: Temperatura de evaporación: -31.7°C (-25°F), Temperatura de condensación: 40.6°C (105°F), Supercalentamiento 50K, sin subenfriamiento.

YF/YSF Series

R404A

Low Temperature Refrigeration Application
Aplicación de baja temperatura

Liquid Injection / Inyección de líquidos

Model Modelo	Electricity Electricidad (V/Hz)	Phase Fases (Ph)	Power Caballos de fuerza (HP)	Displ. Desp. (m³/h)	Capacity Capacidad (W)	Power in Watt Potencia en Watt (W)	COP (W/W)	Running Current Corriente de operación (A)	MOC (A)	LRA (A)	Initial Charge Volume Carga de volumen inicial (L)	Dimensions Dimensiones
220V 1 Phase/Fases 60Hz												R404A
YF13E3G-Q100	220V/60HZ	1	2	7.0	1663	1514	1.10	7.4	16.1	76	1.4	P28
YF17E3G-Q100	220V/60HZ	1	2.5	8.8	2121	1919	1.11	9.2	17.0	76	1.4	P28
YF20E3G-Q100	220V/60HZ	1	3	9.7	2494	2239	1.11	10.9	19.4	76	1.4	P28
YF29E3G-Q100	220V/60HZ	1	4	14.2	3774	3083	1.22	15.0	28.0	109	1.6	P28
YF35E3G-Q100	220V/60HZ	1	5	17.4	4932	3719	1.33	18.8	31.4	140	1.6	P29
220V 3 Phase/Fases 60Hz												R404A
YF13E7G-Q100	220V/60HZ	3	2	7.0	1691	1496	1.13	6.9	9.3	99	1.4	P28
YF17E7G-Q100	220V/60HZ	3	2.5	8.8	2159	1896	1.14	7.5	11.1	99	1.4	P28
YF20E7G-Q100	220V/60HZ	3	3	9.7	2536	2206	1.15	9.5	12.1	99	1.4	P28
YF25E7G-Q100	220V/60HZ	3	3.5	12.4	3562	2849	1.25	10.0	15.3	136	1.4	P28
YF29E7G-Q100	220V/60HZ	3	4	14.2	3837	3044	1.26	11.0	18.4	136	1.6	P28
YF35E7G-Q100	220V/60HZ	3	5	17.4	4552	3496	1.30	13.7	21.5	136	1.6	P28
YF41E7G-Q100	220V/60HZ	3	6	20.5	5332	4063	1.31	14.6	25.2	136	1.6	P29
380V 3 Phase/Fases 60Hz												R404A
YF13E5G-Q100	380V/60HZ	3	2	7.0	1691	1496	1.13	4.0	5.4	51	1.4	P28
YF17E5G-Q100	380V/60HZ	3	2.5	8.8	2159	1896	1.14	4.4	6.4	51	1.4	P28
YF20E5G-Q100	380V/60HZ	3	3	9.7	2536	2206	1.15	5.5	7.0	51	1.4	P28
YF29E5G-Q100	380V/60HZ	3	4	14.2	3837	3044	1.26	6.4	10.6	69	1.4	P28
YF35E5G-Q100	380V/60HZ	3	5	17.4	4552	3496	1.30	7.9	12.5	69	1.4	P28
YF41E5G-Q100	380V/60HZ	3	6	20.5	5332	4063	1.31	8.5	14.6	69	1.4	P29
460V 3 Phase/Fases 60Hz												R404A
YF13E1G-Q100	460V/60HZ	3	2	7.0	1691	1496	1.13	2.5	3.8	22	1.4	P28
YF17E1G-Q100	460V/60HZ	3	2.5	8.8	2159	1896	1.14	2.9	4.4	22	1.4	P28
YF20E1G-Q100	460V/60HZ	3	3	9.7	2536	2206	1.15	4.5	5.8	45	1.4	P28
YF29E1G-Q100	460V/60HZ	3	4	14.2	3837	3044	1.26	5.3	8.8	60	1.4	P28
YF35E1G-Q100	460V/60HZ	3	5	17.4	4552	3496	1.30	6.6	10.3	60	1.4	P28
YF41E1G-Q100	460V/60HZ	3	6	20.5	5332	4063	1.31	7.0	12.1	65	1.6	P28

Cooling capacity @ ARI540 LT standard rating conditions: Evaporating temperature: -31.7°C (-25°F), Condensing temperature: 40.6°C (105°F), Superheat 50K, no sub-cooling.
Capacidad de enfriamiento @ ARI540 LT Condiciones de calibración estándar: Temperatura de evaporación: -31.7°C (-25°F), Temperatura de condensación: 40.6°C (105°F), Supercalentamiento 50K, sin subenfriamiento.

YF/YSF Series

Vapor Injection / Inyección de Vapor

R404A

Low Temperature Refrigeration Application

Aplicación de baja temperatura

Model Modelo	Electricity Electricidad (V/Hz)	Phase Fases (Ph)	Power Caballos de fuerza (HP)	Displ. Desp. (m³/h)	Capacity Capacidad (W)	Power in Watt Potencia en Watt (W)	COP (W/W)	Running Current Corriente de operación (A)	MOC (A)	LRA (A)	Initial Charge Volume Carga de volumen inicial (L)	Dimensions Dimensiones
220V 1 Phase/Fases 60Hz												R404A
YF13E3G-V100	220V/60HZ	1	2	7.0	2590	2020	1.28	9.6	16.1	76	1.4	P28
YF17E3G-V100	220V/60HZ	1	2.5	8.8	2950	2270	1.30	10.7	17.0	76	1.4	P28
YF20E3G-V100	220V/60HZ	1	3	9.7	3490	2640	1.32	12.5	19.4	76	1.4	P28
YF29E3G-V100	220V/60HZ	1	4	14.2	5304	3744	1.42	17.8	28.0	109	1.6	P28
YF35E3G-V100	220V/60HZ	1	5	17.4	6312	4343	1.45	21.9	31.4	140	1.6	P29
220V 3 Phase/Fases 60Hz												R404A
YF13E7G-V100	220V/60HZ	3	2	7.0	2635	1997	1.32	7.6	9.3	99	1.4	P28
YF17E7G-V100	220V/60HZ	3	2.5	8.8	3001	2238	1.34	8.0	11.1	99	1.4	P28
YF20E7G-V100	220V/60HZ	3	3	9.7	3550	2614	1.36	10.1	12.1	99	1.4	P28
YF25E7G-V100	220V/60HZ	3	3.5	12.4	4485	3353	1.34	10.9	15.3	136	1.4	P28
YF29E7G-V100	220V/60HZ	3	4	14.2	5392	3703	1.46	12.1	18.4	136	1.6	P28
YF35E7G-V100	220V/60HZ	3	5	17.4	6417	4211	1.52	15.4	21.5	136	1.6	P28
YF41E7G-V100	220V/60HZ	3	6	20.5	8174	5130	1.59	16.4	25.2	136	1.6	P29
YSF60E7G-V100	220V/60HZ	3	7	24.1	8430	5286	1.59	19.9	37.4	241	2.7	P30
YSF65E7G-V100	220V/60HZ	3	8	25.7	8979	5639	1.59	20.9	39.9	241	2.7	P30
YSF75E7G-V100	220V/60HZ	3	9	30.4	10619	6582	1.61	22.6	46.6	241	2.7	P30
YSF85E7G-V100	220V/60HZ	3	10	34.9	12212	7570	1.61	24.9	53.7	241	2.7	P30
YSF90E7G-V100	220V/60HZ	3	12	39.5	13810	8455	1.63	27.0	60.2	241	2.7	P30
YSF100E7G-V100	220V/60HZ	3	13	41.2	14396	8814	1.63	27.8	56.4	241	2.7	P30
380V 3 Phase/Fases 60Hz												R404A
YF13E5G-V100	380V/60HZ	3	2	7.0	2635	1997	1.32	4.4	5.4	51	1.4	P28
YF17E5G-V100	380V/60HZ	3	2.5	8.8	3001	2238	1.34	4.6	6.4	51	1.4	P28
YF20E5G-V100	380V/60HZ	3	3	9.7	3550	2614	1.36	5.8	7.0	51	1.4	P28
YF29E5G-V100	380V/60HZ	3	4	14.2	5392	3703	1.46	7.0	10.6	69	1.6	P28
YF35E5G-V100	380V/60HZ	3	5	17.4	6417	4211	1.52	8.9	12.5	69	1.6	P28
YF41E5G-V100	380V/60HZ	3	6	20.5	8174	5130	1.59	9.5	14.6	69	1.6	P29
YSF60E5G-V100	380V/60HZ	3	7	24.1	8430	5286	1.59	11.5	21.7	135	2.7	P30
YSF65E5G-V100	380V/60HZ	3	8	25.7	8979	5639	1.59	12.1	23.1	135	2.7	P30
YSF75E5G-V100	380V/60HZ	3	9	30.4	10619	6582	1.61	13.1	27.0	135	2.7	P30
YSF85E5G-V100	380V/60HZ	3	10	34.9	12212	7570	1.61	14.4	31.1	135	2.7	P30
YSF90E5G-V100	380V/60HZ	3	12	39.5	13810	8455	1.63	15.6	34.8	135	2.7	P30
YSF100E5G-V100	380V/60HZ	3	13	41.2	14396	8814	1.63	16.1	32.7	135	2.7	P30

Cooling capacity @ ARI540 LT standard rating conditions: Evaporating temperature: -31.7°C (-25°F), Condensing temperature: 40.6°C (105°F), Superheat 50K, no sub-cooling.
 Capacidad de enfriamiento @ ARI540 LT Condiciones de calibración estándar: Temperatura de evaporación: -31.7°C (-25°F), Temperatura de condensación: 40.6°C (105°F),
 Supercalentamiento 50K, sin subenfriamiento.

YF/YSF Series

R404A

Vapor Injection / Inyección de Vapor

Low Temperature Refrigeration Application
Aplicación de baja temperatura

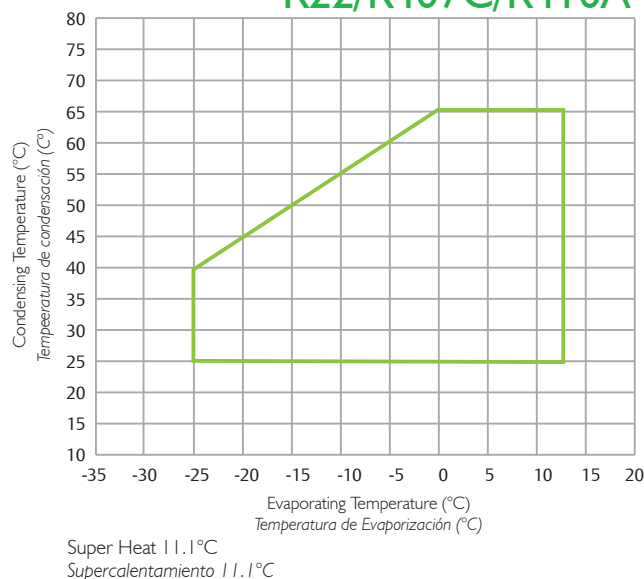
Model Modelo	Electricity Electricidad (V/Hz)	Phase Fases (Ph)	Power Caballos de fuerza (HP)	Displ. Desp. (m³/h)	Capacity Capacidad (W)	Power in Watt Potencia en Watt (W)	COP (W/W)	Running Current Corriente de operación (A)	MOC (A)	LRA (A)	Initial Charge Volume Carga de volumen inicial (L)	Dimensions Dimensiones
460V 3 Phase/Fases 60Hz												R404A
YFI3E1G-V100	460V/60HZ	3	2	7.0	2635	1997	1.32	2.9	3.8	22	1.4	P28
YFI7E1G-V100	460V/60HZ	3	2.5	8.8	3001	2238	1.34	3.2	4.4	22	1.4	P28
YF20E1G-V100	460V/60HZ	3	3	9.7	3550	2614	1.36	4.8	5.8	45	1.4	P28
YF29E1G-V100	460V/60HZ	3	4	14.2	5392	3703	1.46	5.8	8.8	60	1.4	P28
YF35E1G-V100	460V/60HZ	3	5	17.4	6417	4211	1.52	7.4	10.3	60	1.4	P28
YF41E1G-V100	460V/60HZ	3	6	20.5	8174	5130	1.59	7.9	12.1	65	1.6	P29
YSF60E4G-V100	460V/60HZ	3	7	24.1	8430	5286	1.59	9.5	17.9	117	2.7	P30
YSF65E4G-V100	460V/60HZ	3	8	25.7	8979	5639	1.59	10.0	19.1	117	2.7	P30
YSF75E4G-V100	460V/60HZ	3	9	30.4	10619	6582	1.61	10.8	22.3	117	2.7	P30
YSF85E4G-V100	460V/60HZ	3	10	34.9	12212	7570	1.61	11.9	25.7	117	2.7	P30
YSF90E4G-V100	460V/60HZ	3	12	39.5	13810	8455	1.63	12.9	28.8	117	2.7	P30
YSFI00E4G-V100	460V/60HZ	3	13	41.2	14396	8814	1.63	13.3	27.0	117	2.7	P30
YSFI25E4G-V100	460V/60HZ	3	15	50.9	16200	11408	1.42	18.0	33.4	149	3.2	P31

Cooling capacity @ ARI540 LT standard rating conditions: Evaporating temperature: -31.7°C (-25°F), Condensing temperature: 40.6°C (105°F), Superheat 50K, no sub-cooling.
Capacidad de enfriamiento @ ARI540 LT Condiciones de calibración estándar: Temperatura de evaporación: -31.7°C (-25°F), Temperatura de condensación: 40.6°C (105°F), Supercalentamiento 50K, sin subenfriamiento.

YH/YSH Series

Operating Envelope / Desarrollo de Operación

R22/R407C/R410A

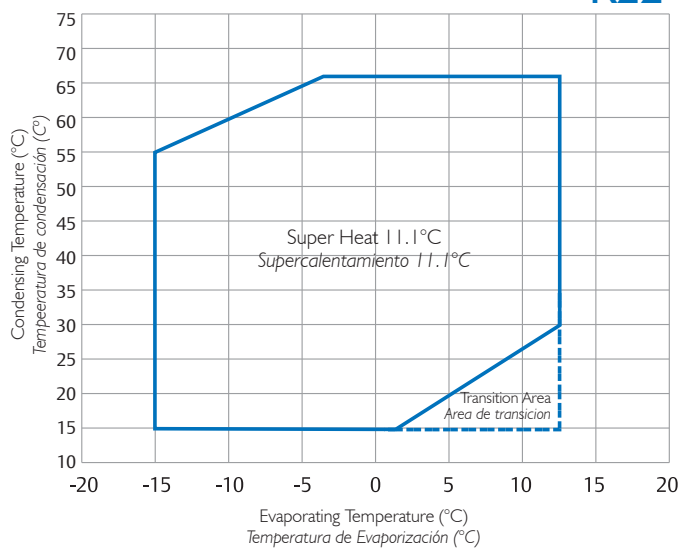


YM/YSM Series

Operating Envelope / Desarrollo de Operación

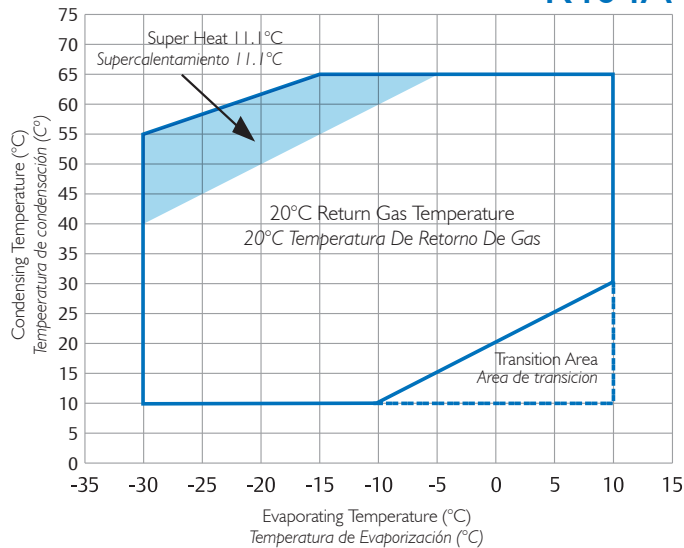
YM34-YM210 YSM235-YSM260

R22

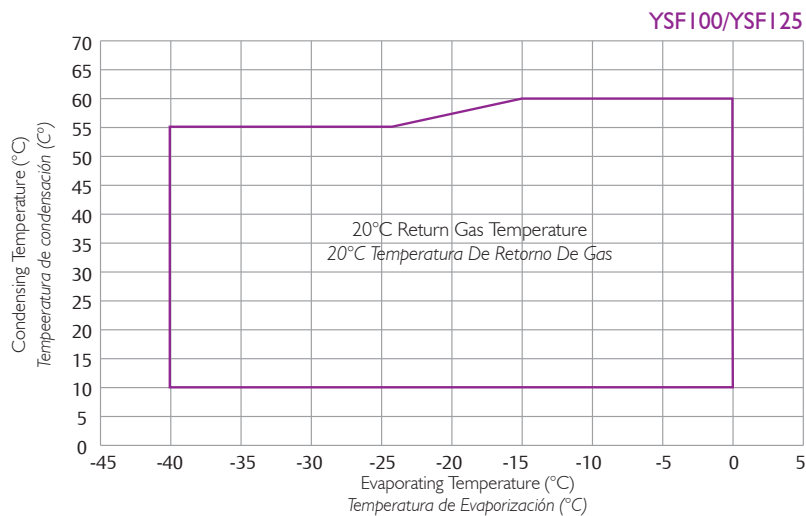
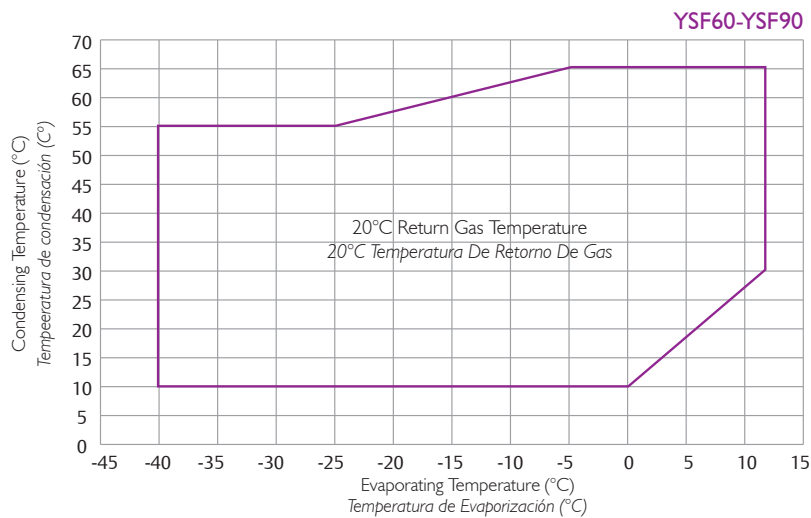
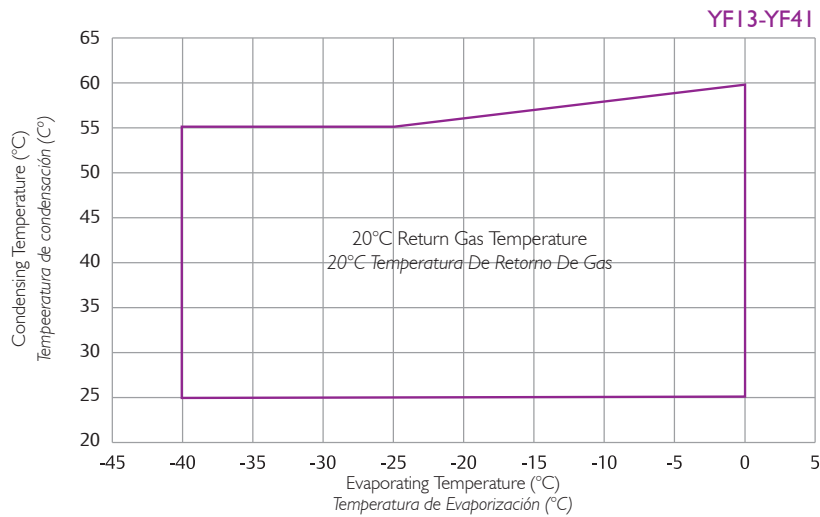


YM34-YM210 YSM235-YSM260

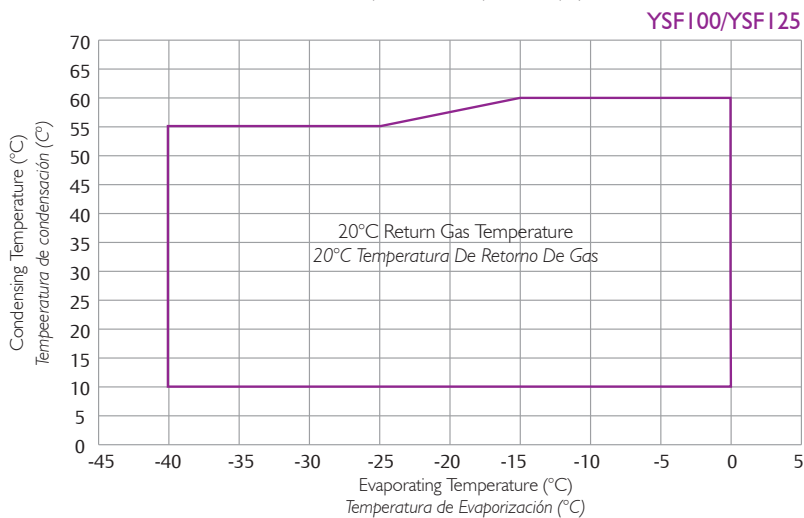
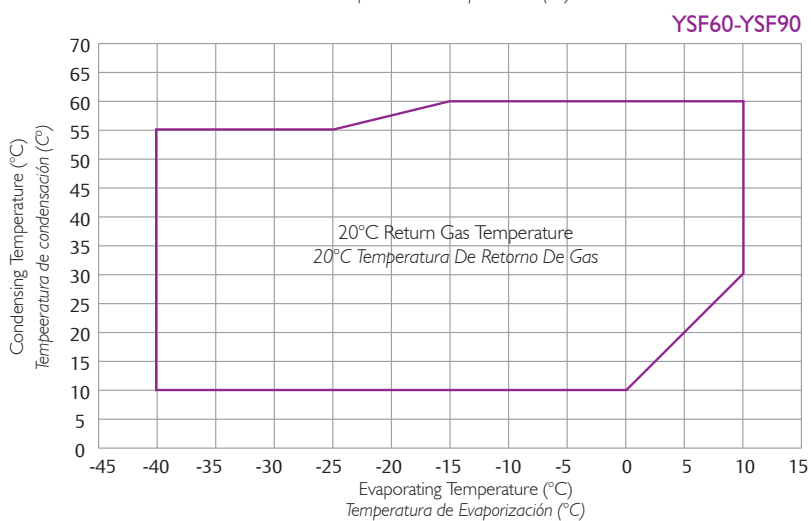
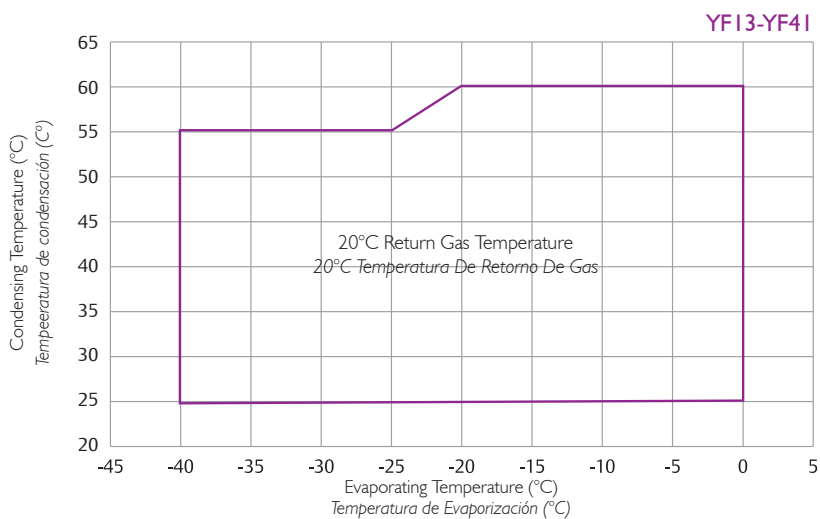
R404A



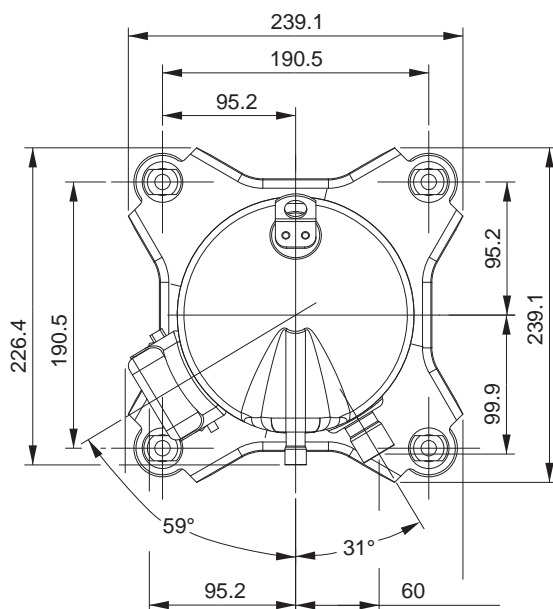
Operating Envelope / Desarrollo de Operación



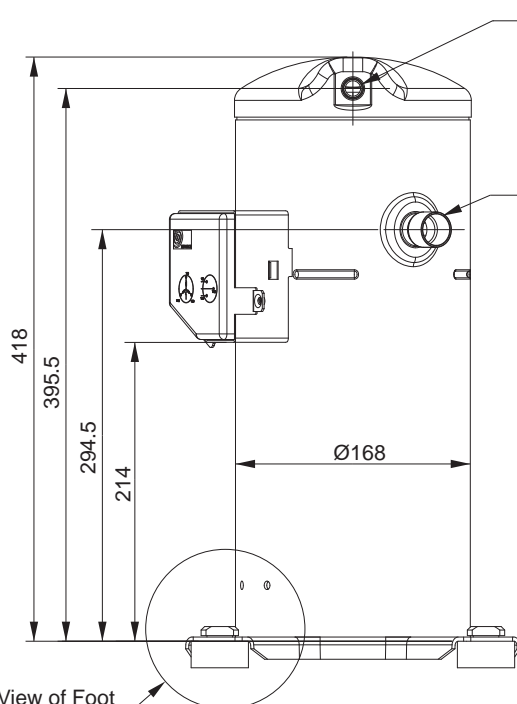
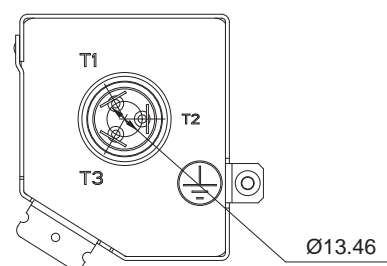
Operating Envelope / Desarrollo de Operación



Dimensions / Dimensiones



Terminal Box
Diagrama de cableado



ID Ø12.87-12.97

Min. Depth / Min. Profundidad: 10.6

Discharge Tube, Steel Tube with Copper Plating

Tubo de descarga, Tubo de acero con revestimiento de cobre

Thickness of Copper / Grueso de cobre: 0.04 - 0.08

ID Ø22.35-22.45

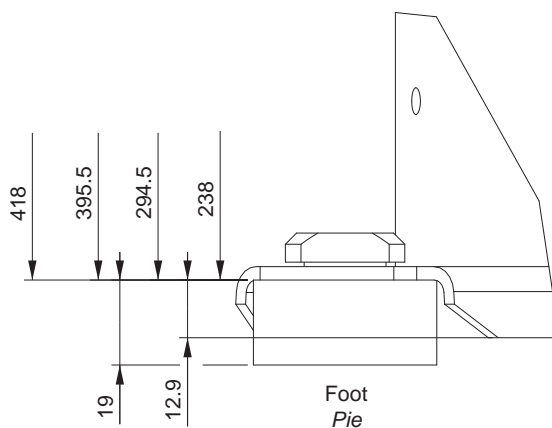
Min. Depth / Min. Profundidad: 17.3

Suction Tube, Steel Tube with Copper Plating

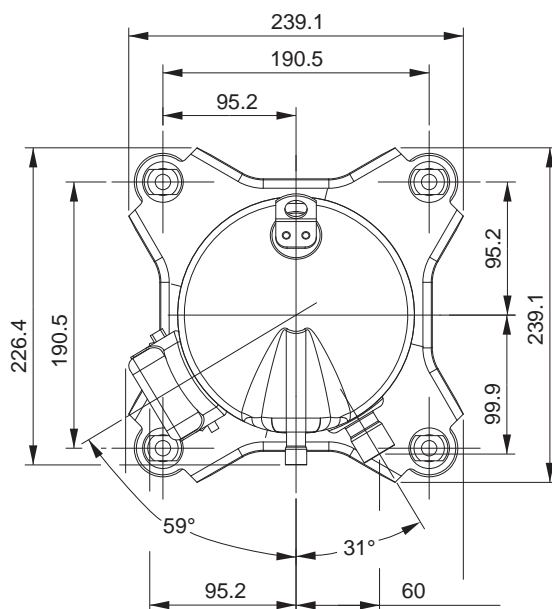
Tubo de succión, Tubo de acero con revestimiento de cobre

Thickness of Copper / Grueso de cobre: 0.04 - 0.08

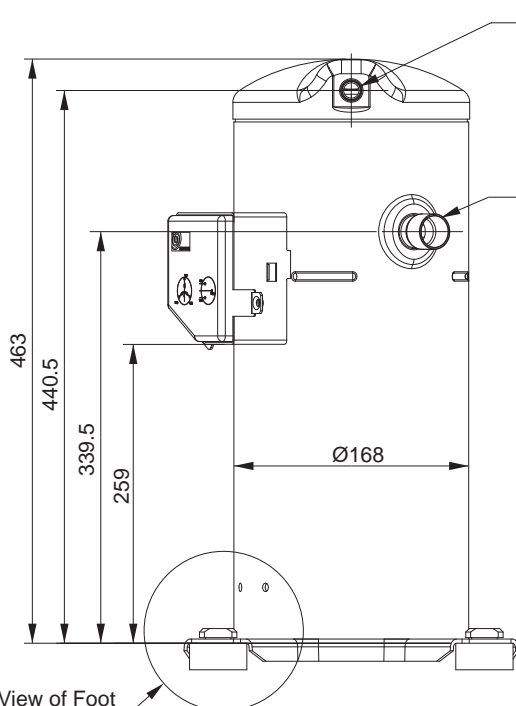
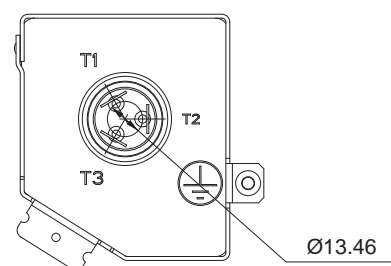
See Details in View of Foot
Ver detalles en vista en pie



Dimensions / Dimensiones



Terminal Box
Diagrama de cableado



ID Ø12.87-12.97

Min. Depth / Min. Profundidad: 10.6

Discharge Tube, Steel Tube with Copper Plating

Tubo de descarga, Tubo de acero con revestimiento de cobre

Thickness of Copper / Grueso de cobre: 0.04 - 0.08

ID Ø22.35-22.45

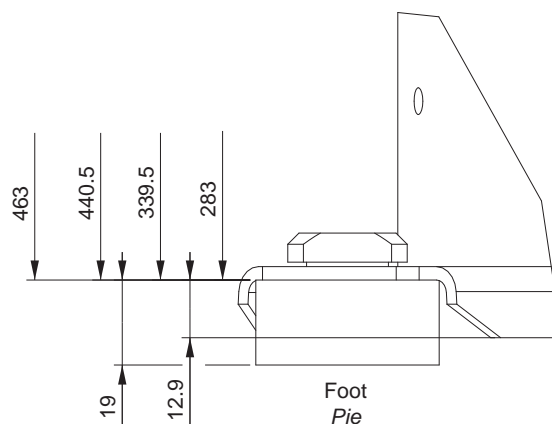
Min. Depth / Min. Profundidad: 17.3

Suction Tube, Steel Tube with Copper Plating

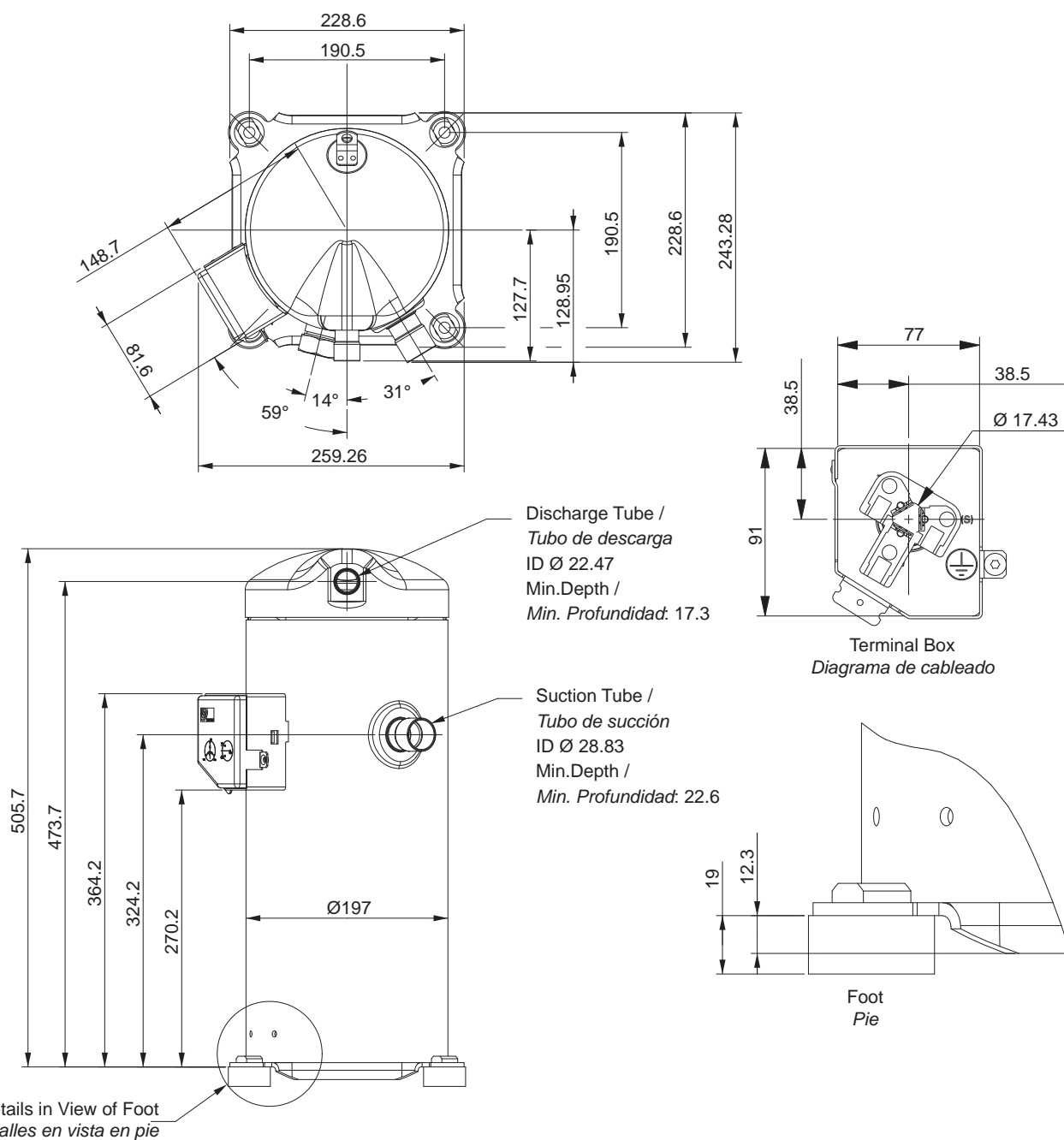
Tubo de succión, Tubo de acero con revestimiento de cobre

Thickness of Copper / Grueso de cobre: 0.04 - 0.08

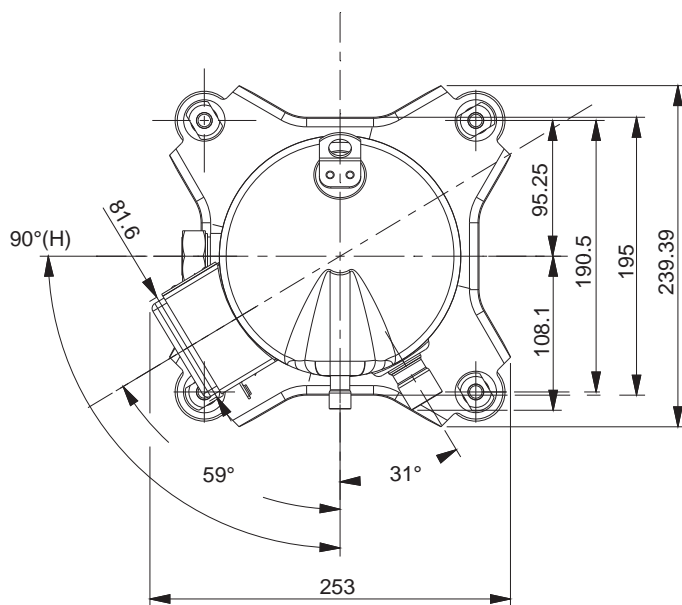
See Details in View of Foot
Ver detalles en vista en pie



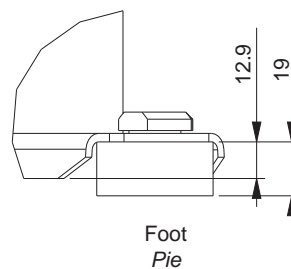
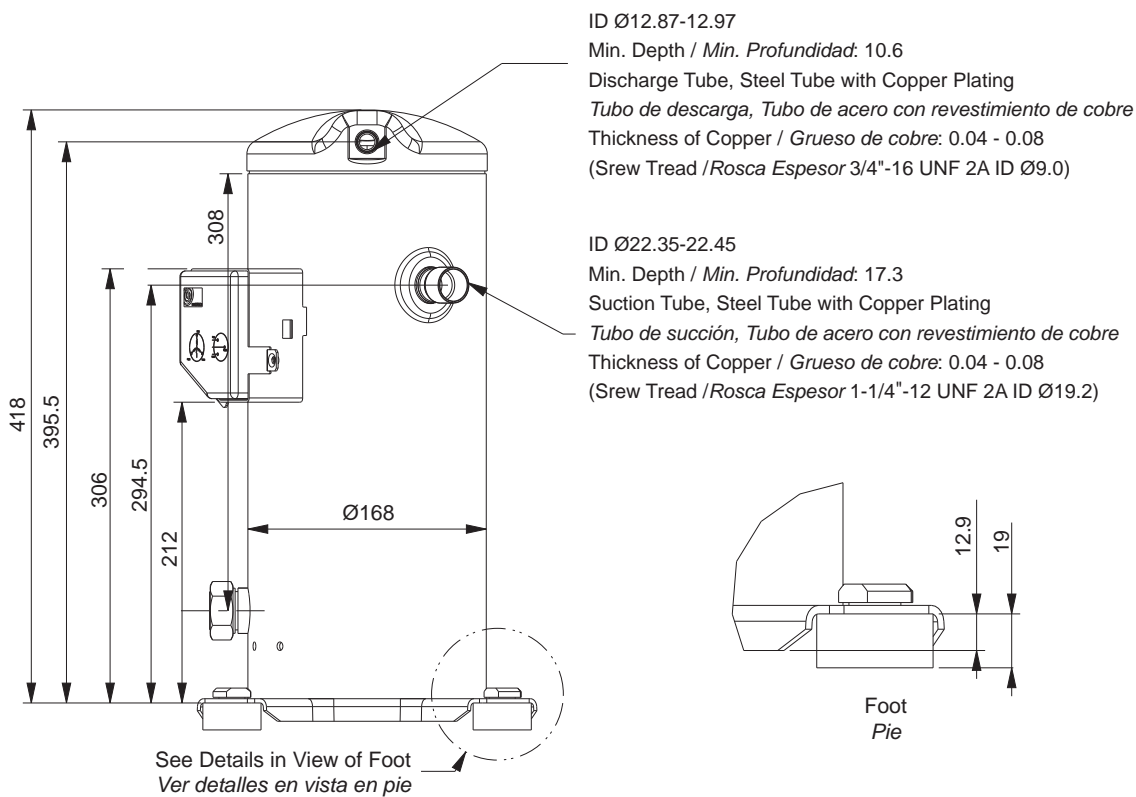
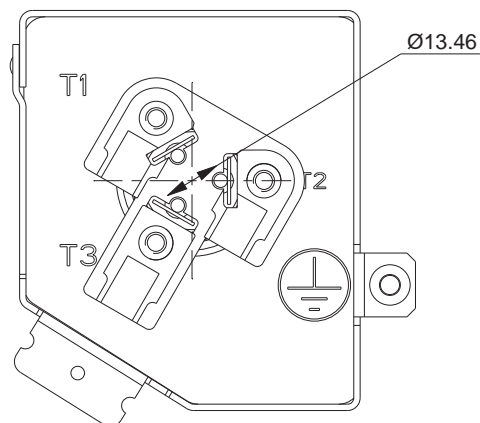
Dimensions / Dimensiones



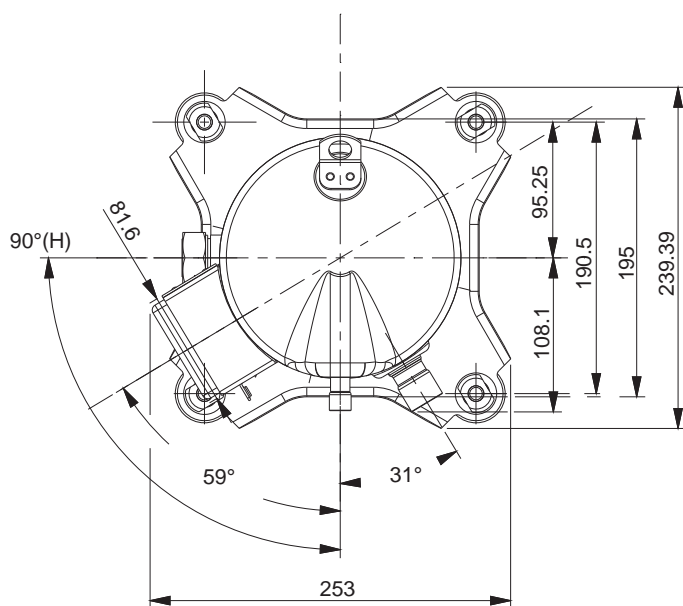
Dimensions / Dimensiones



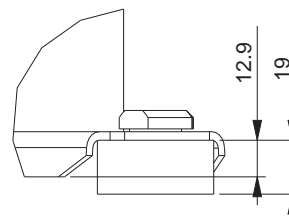
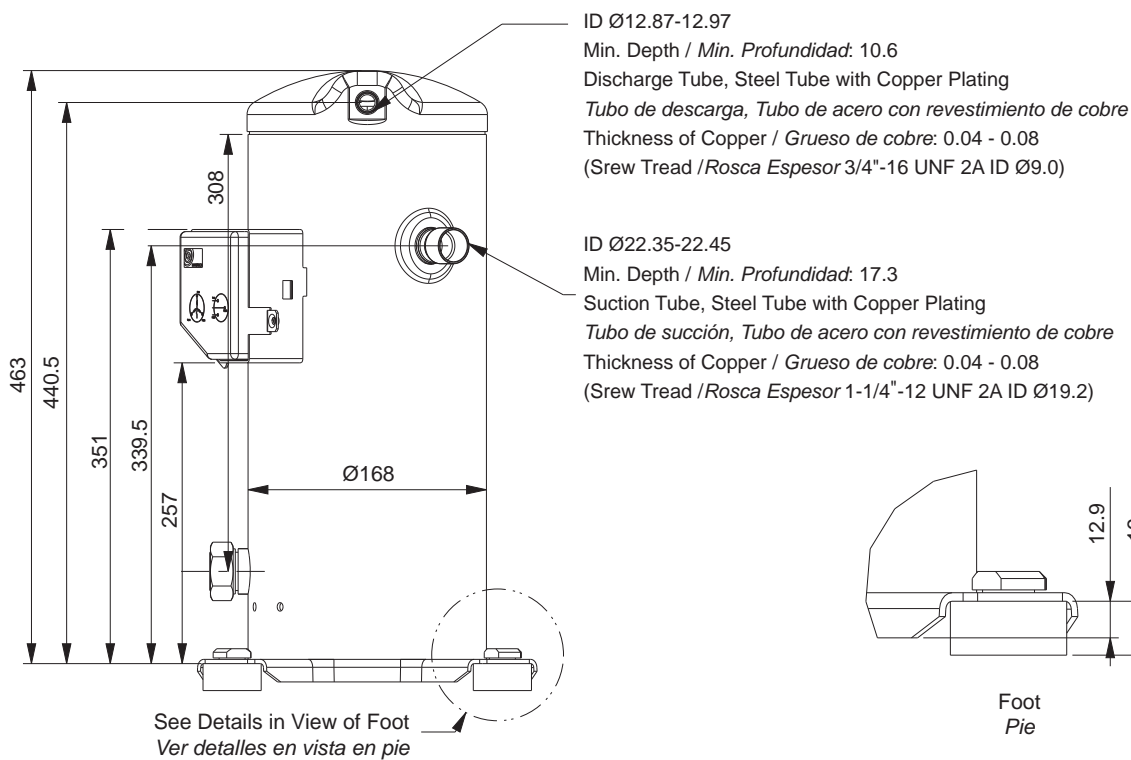
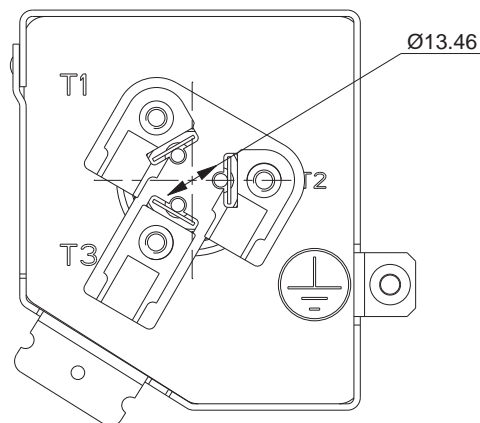
Terminal Box
Diagrama de cableado



Dimensions / Dimensiones

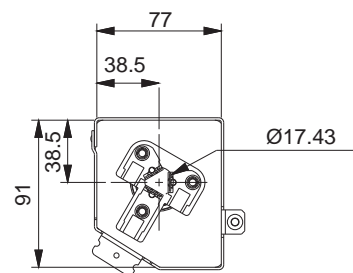
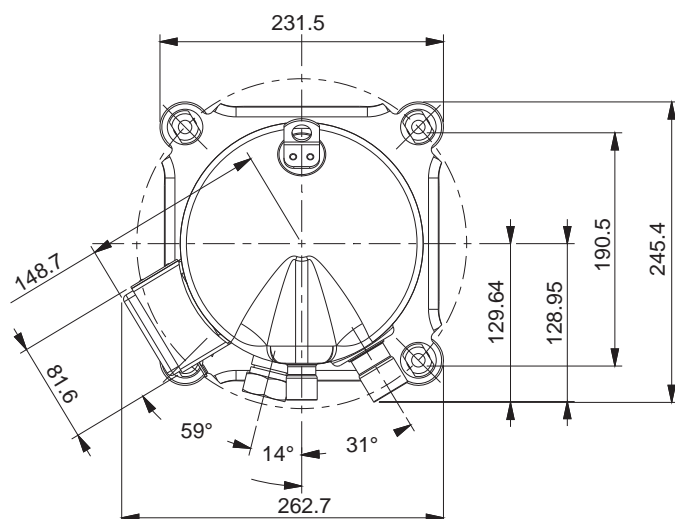


Terminal Box
Diagrama de cableado



Foot
Pie

Dimensions / Dimensiones



Terminal Box
Diagrama de cableado

ID Ø22.35-22.45

Min. Depth / Min. Profundidad: 17.3

Discharge Tube, Steel Tube with Copper Plating

Tubo de descarga, Tubo de acero con revestimiento de cobre

Thickness of Copper / Grueso de cobre: 0.04 - 0.08

(Srew Tread / Rosca Espesor 1-1/4"-12 UNF 2A ID Ø19.2)

ID Ø28.83-28.93

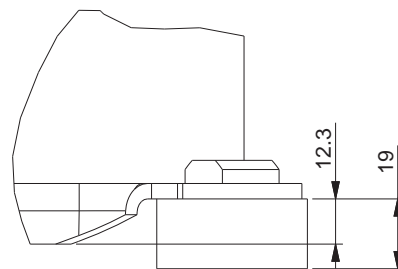
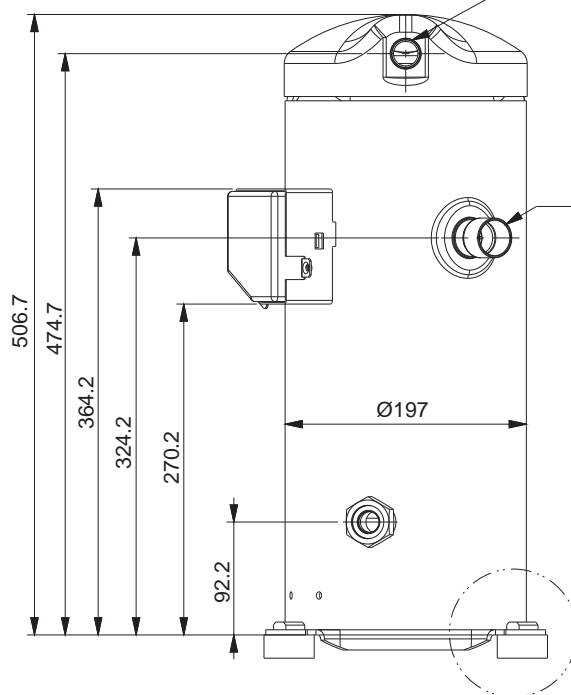
Min. Depth / Min. Profundidad: 22.6

Suction Tube, Steel Tube with Copper Plating

Tubo de succión, Tubo de acero con revestimiento de cobre

Thickness of Copper / Grueso de cobre: 0.04 - 0.08

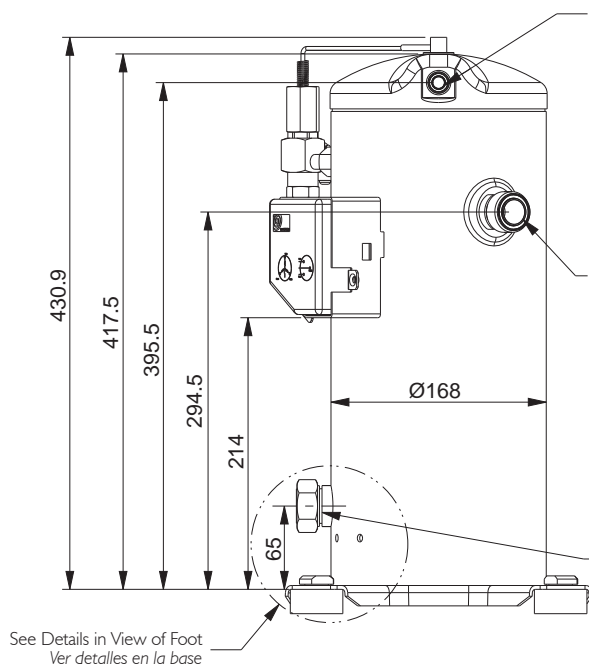
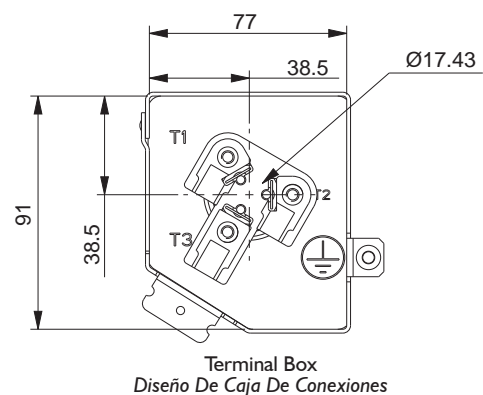
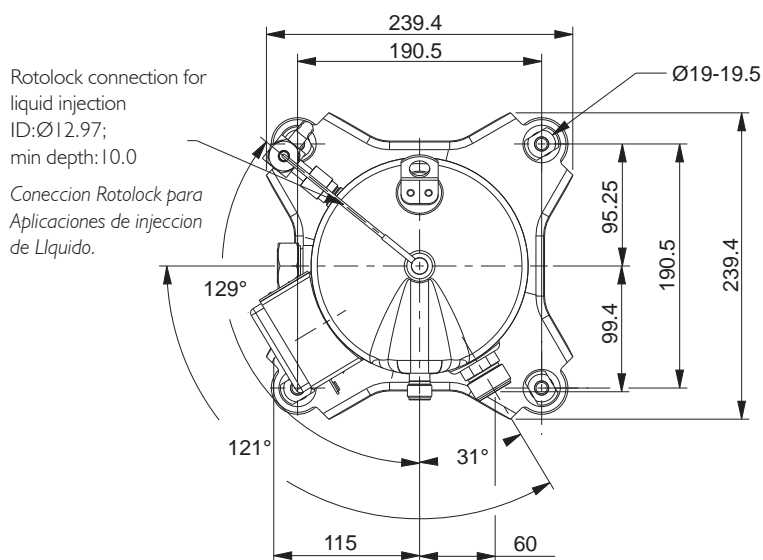
(Srew Tread / Rosca Espesor 1-3/4"-12 UN ID Ø26)



Foot
Pie

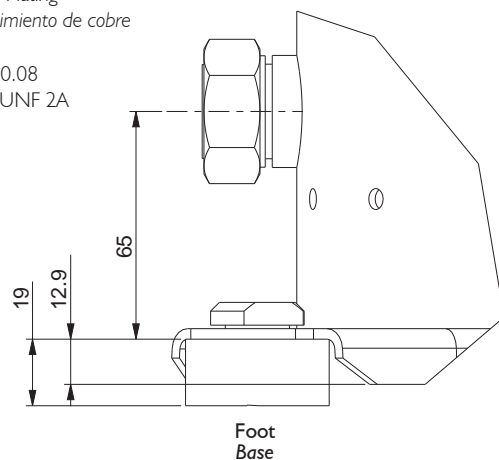
See Details in View of Foot
Ver detalles en vista en pie

Dimensions / Dimensiones

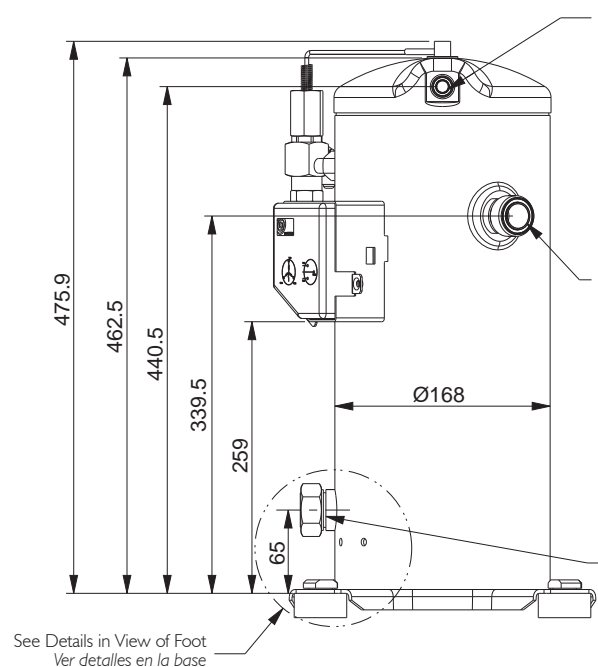
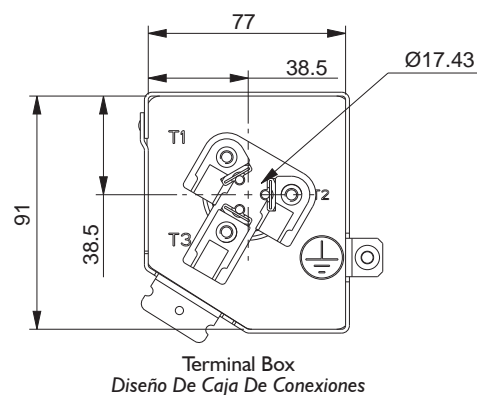
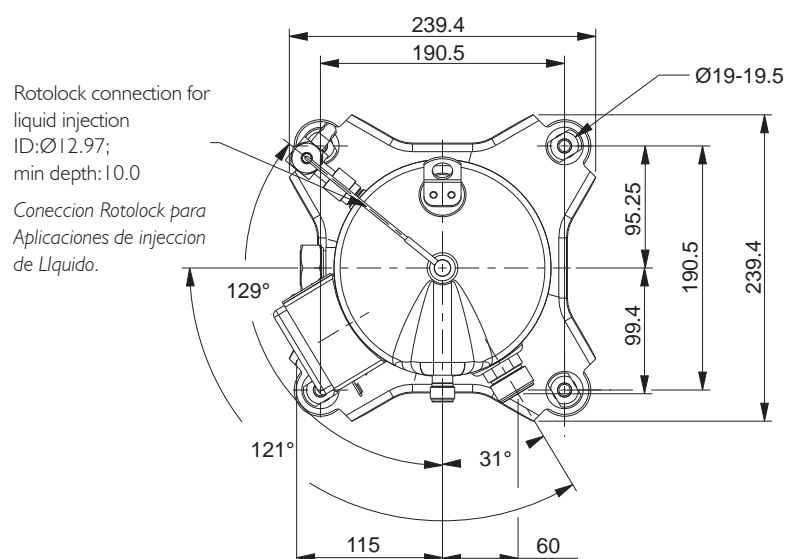


ID Ø12.78 - 12.95
Min.Depth / Min. Profundidad: 10.6
Discharge Tube / Tubo de descarga,
Steel Tube with Copper Plating
Tubo de acero con revestimiento de cobre
Thickness of Copper / Grueso de cobre: 0.04 - 0.08
(Srew Tread: 3/4"-16 UNF 2A
ID Ø9.0)

ID Ø22.3 - 22.48
Min.Depth / Min. Profundidad: 17.3
Suction Tube / Tubo de succión,
Steel Tube with Copper Plating
Tubo de acero con revestimiento de cobre
Thickness of Copper /
Grueso de cobre: 0.04 - 0.08
(Srew Tread: 1 1/4"-12 UNF 2A
ID Ø19.2)

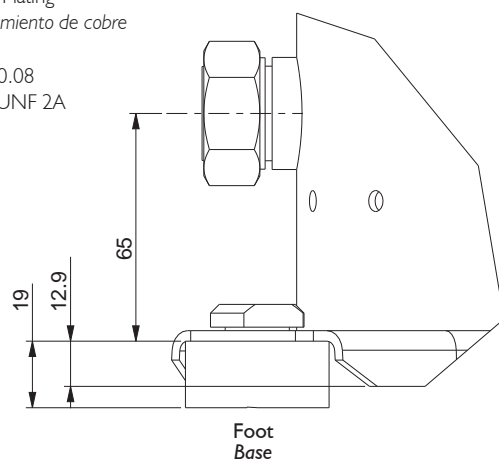


Dimensions / Dimensiones

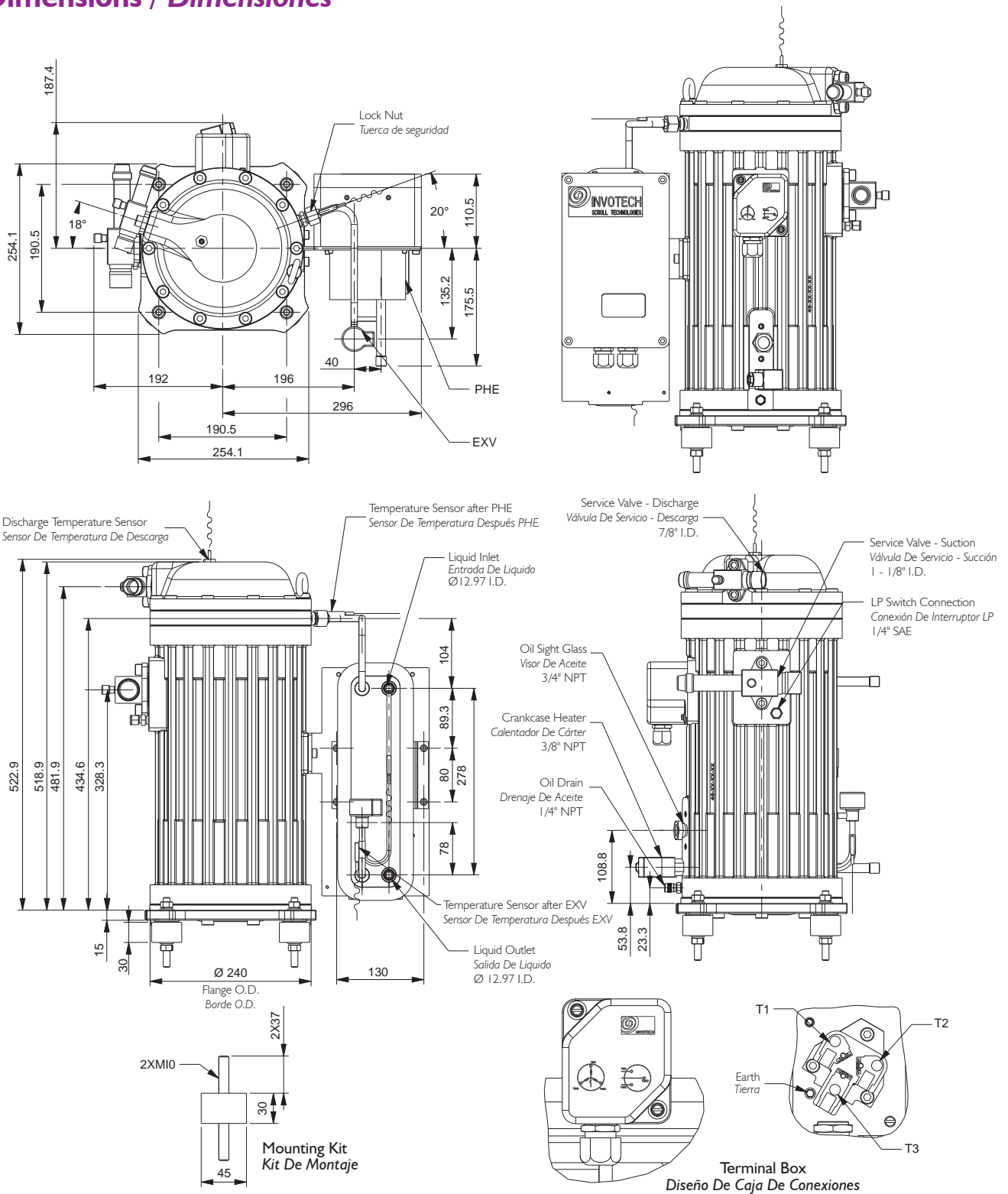


ID Ø12.78 - 12.95
Min.Depth / Min. Profundidad: 10.6
Discharge Tube / Tubo de descarga,
Steel Tube with Copper Plating
Tubo de acero con revestimiento de cobre
Thickness of Copper / Grueso de cobre: 0.04 - 0.08
(Srew Tread: 3/4"-16 UNF 2A
ID Ø9.0)

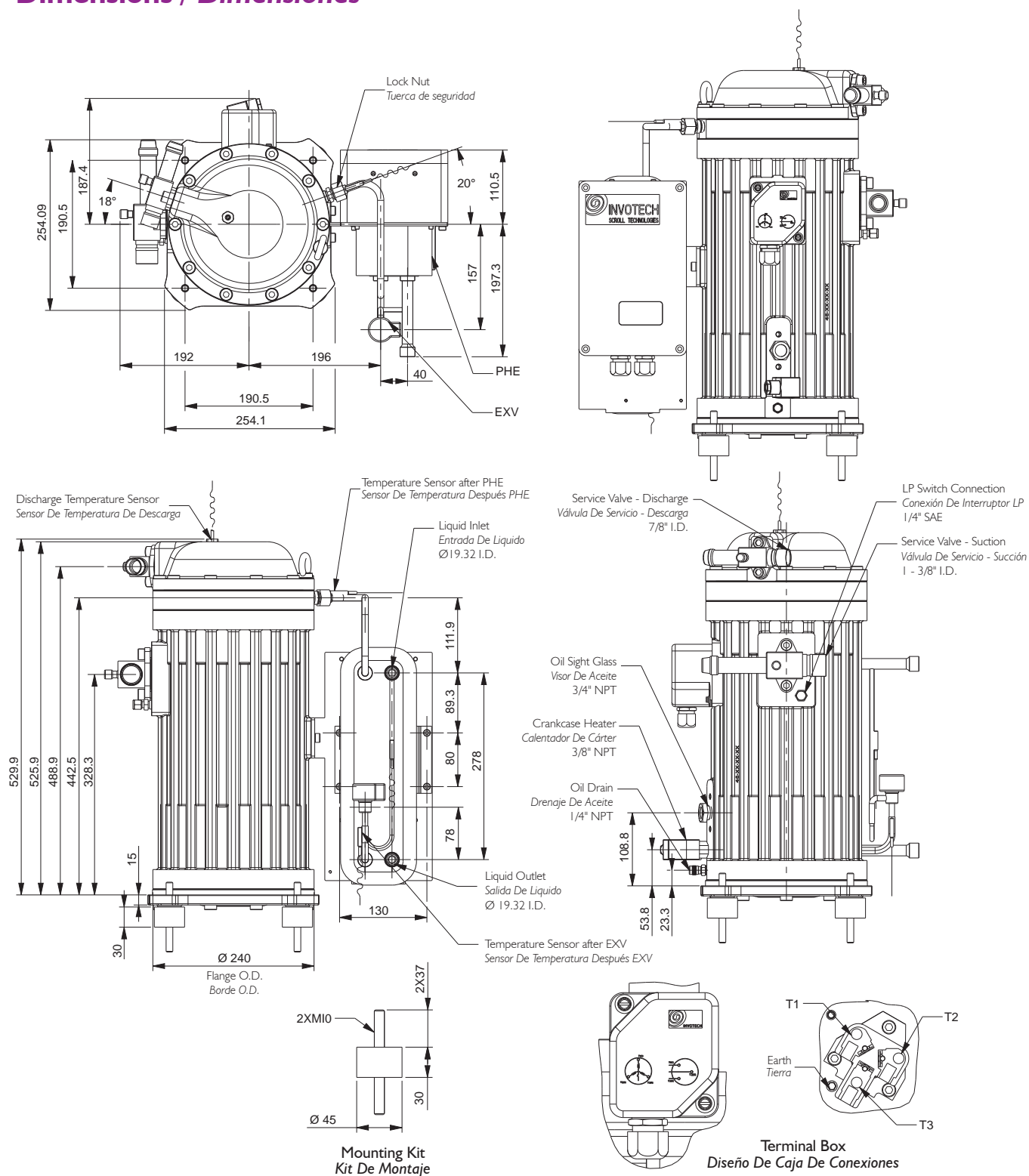
ID Ø22.3 - 22.48
Min.Depth / Min. Profundidad: 17.3
Suction Tube / Tubo de succión,
Steel Tube with Copper Plating
Tubo de acero con revestimiento de cobre
Thickness of Copper / Grueso de cobre: 0.04 - 0.08
(Srew Tread: 1 1/4"-12 UNF 2A
ID Ø19.2)



Dimensions / Dimensiones



Dimensions / Dimensiones



Dimensions / Dimensiones

